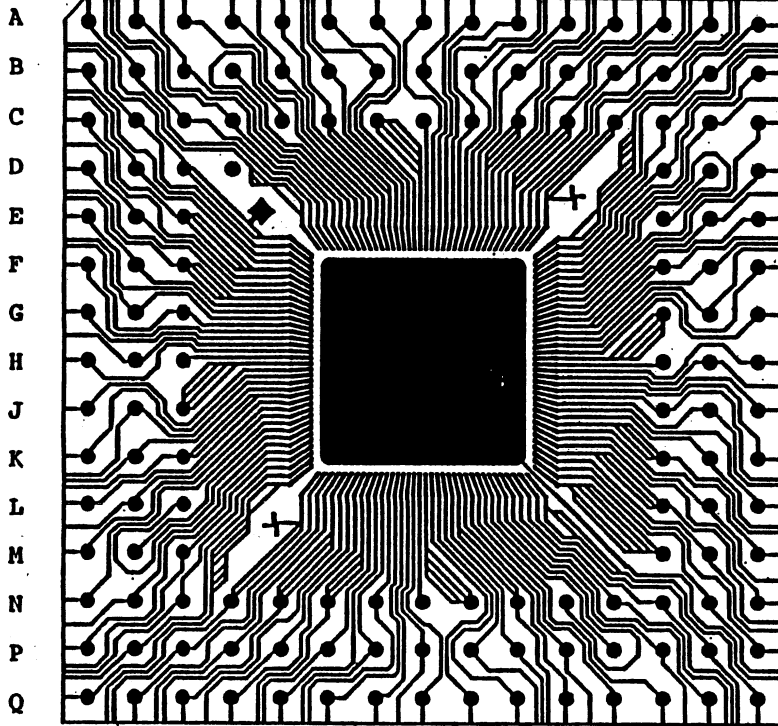
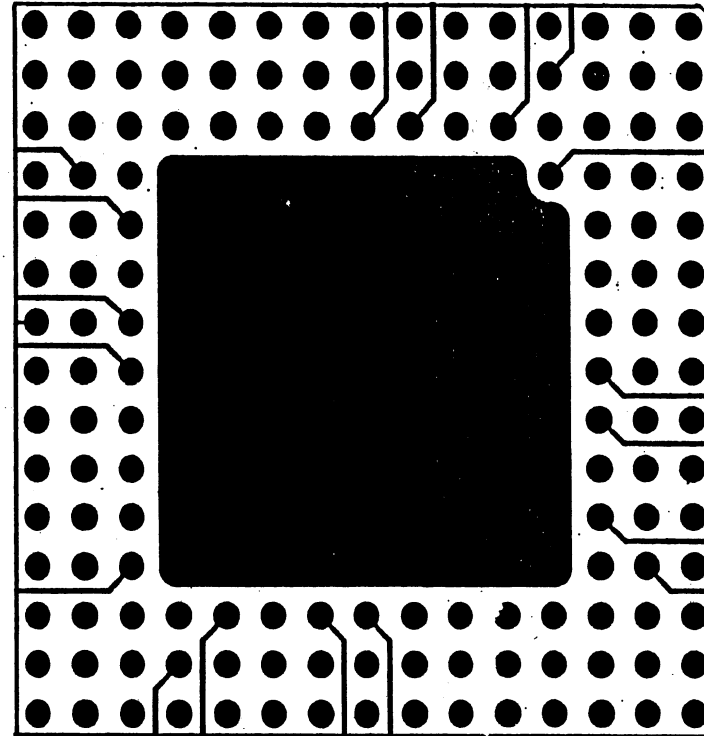


SSM P/N PPG14405

1 2 3 4 5 6 7 8 9 10 11 12 13 14 15



BOND SIDE PATTERN



BACK SIDE PATTERN

| | |
|-------------|----------------|
| PIN COUNT | 144 |
| PART NUMBER | PGA-144U-C-450 |



SPECTRUM
SEMICONDUCTOR MATERIALS, INC.

www.spectrum-semi.com Phone: 408-435-5555 Fax: 408-435-8226

SSM P/N PPG14405

PIN TO PAD INTERCONNECTION TABLE

| PAD NO. | PIN NO. | PAD NO. | PIN NO. | PAD NO. | PIN NO. | PAD NO. | PIN NO. | PAD NO. | PIN NO. |
|---------|---------|---------|---------|---------|---------|---------|---------|---------|---------|
| 1 | D 3 | 21 | K 1 | 41 | N 5 | 61 | Q11 | 81 | K13 |
| 2 | C 2 | 22 | J 2 | 42 | Q 3 | 62 | P11 | 82 | K14 |
| 3 | B 1 | 23 | K 2 | 43 | P 5 | 63 | Q12 | 83 | L15 |
| 4 | D 2 | 24 | K 3 | 44 | Q 4 | 64 | Q13 | 84 | J14 |
| 5 | E 3 | 25 | L 1 | 45 | N 6 | 65 | P12 | 85 | J13 |
| 6 | C 1 | 26 | L 2 | 46 | P 6 | 66 | N11 | 86 | K15 |
| 7 | E 2 | 27 | H 1 | 47 | Q 5 | 67 | P13 | 87 | J15 |
| 8 | D 1 | 28 | N 1 | 48 | P 7 | 68 | Q14 | 88 | H14 |
| 9 | F 3 | 29 | H 2 | 49 | N 7 | 69 | N12 | 89 | H15 |
| 10 | F 2 | 30 | L 3 | 50 | Q 6 | 70 | N13 | 90 | H13 |
| 11 | E 1 | 31 | N 2 | 51 | Q 7 | 71 | P14 | 91 | G13 |
| 12 | G 2 | 32 | P 1 | 52 | P 8 | 72 | Q15 | 92 | G15 |
| 13 | G 3 | 33 | H 3 | 53 | Q 8 | 73 | M13 | 93 | F15 |
| 14 | F 1 | 34 | N 3 | 54 | N 8 | 74 | N14 | 94 | G14 |
| 15 | G 1 | 35 | P 2 | 55 | N 9 | 75 | P15 | 95 | F14 |
| 16 | H 2 | 36 | Q 1 | 56 | Q 9 | 76 | M14 | 96 | F13 |
| 17 | H 1 | 37 | N 4 | 57 | Q10 | 77 | L13 | 97 | E15 |
| 18 | H 3 | 38 | P 3 | 58 | P 9 | 78 | N15 | 98 | E14 |
| 19 | J 3 | 39 | Q 2 | 59 | P10 | 79 | L14 | 99 | D15 |
| 20 | J 1 | 40 | P 4 | 60 | N10 | 80 | M15 | 100 | C15 |

| PAD NO. | PIN NO. | PAD NO. | PIN NO. | PAD NO. | PIN NO. |
|---------|---------|---------|---------|---------|---------|
| 101 | D14 | 121 | C 9 | 141 | C 4 |
| 102 | E13 | 122 | A10 | 142 | C 3 |
| 103 | C14 | 123 | A 9 | 143 | B 2 |
| 104 | B15 | 124 | B 8 | 144 | A 1 |
| 105 | D13 | 125 | A 8 | 145 | |
| 106 | C13 | 126 | C 8 | 146 | |
| 107 | B14 | 127 | C 7 | 147 | |
| 108 | A15 | 128 | A 7 | 148 | |
| 109 | C12 | 129 | A 6 | 149 | |
| 110 | B13 | 130 | B 7 | 150 | |
| 111 | A14 | 131 | B 6 | 151 | |
| 112 | B12 | 132 | C 6 | 152 | |
| 113 | C11 | 133 | A 5 | 153 | |
| 114 | A13 | 134 | B 5 | 154 | |
| 115 | B11 | 135 | A 4 | 155 | |
| 116 | A12 | 136 | A 3 | 156 | |
| 117 | C10 | 137 | B 4 | 157 | |
| 118 | B10 | 138 | C 5 | 158 | |
| 119 | A11 | 139 | B 3 | 159 | |
| 120 | B 9 | 140 | A 2 | 160 | |

| | |
|-------------|----------------|
| PIN COUNT | 144 |
| PART NUMBER | PGA-144U-C-450 |

