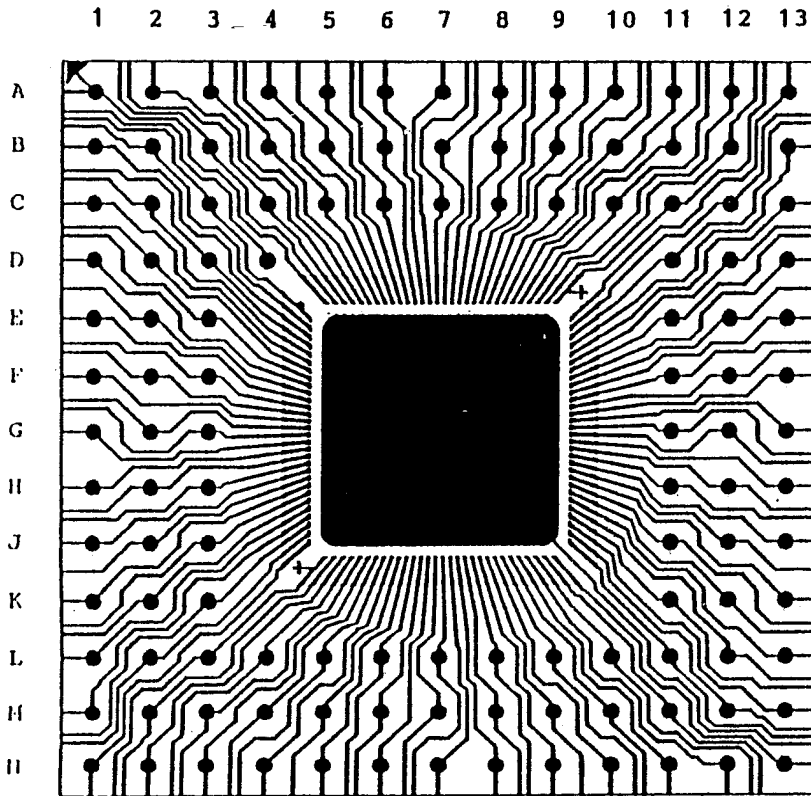
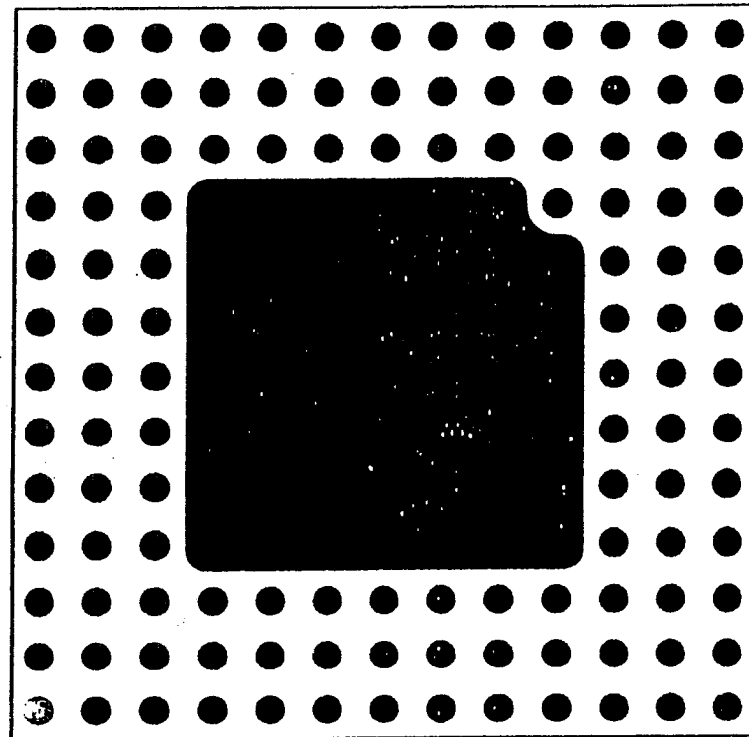


SSM P/N PPG12003



BOND SIDE PATTERN



BACK SIDE PATTERN

PIN COUNT	120
PART NUMBER	PGA120-STD <i>CAV. 433</i>



www.spectrum-semi.com Phone: 408-435-5555 Fax: 408-435-8226

PIN TO PAD INTERCONNECTION TABLE

PAD NO.	PIN NO.	PAD NO.	PIN NO.	PAD NO.	PIN NO.	PAD NO.	PIN NO.	PAD NO.	PIN NO.	PAD NO.	PIN NO.
1	C 3	21	J 1	41	N 5	61	L11	81	E13	101	A 9
2	B 2	22	J 2	42	L 6	62	M12	82	E12	102	C 8
3	B 1	23	K 1	43	M 6	63	M13	83	D13	103	B 8
4	D 3	24	J 3	44	N 6	64	K11	84	E11	104	A 8
5	C 2	25	K 2	45	M 7	65	L12	85	D12	105	B 7
6	C 1	26	L 1	46	L 7	66	L13	86	C13	106	C 7
7	D 2	27	M 1	47	N 7	67	K12	87	D13	107	A 7
8	E 3	28	K 3	48	N 8	68	J11	88	D11	108	A 6
9	D 1	29	L 2	49	M 8	69	K13	89	C12	109	B 6
10	E 2	30	N 1	50	L 8	70	J12	90	A13	110	C 6
11	E 1	31	L 3	51	N 9	71	J13	91	C11	111	A 5
12	F 3	32	M 2	52	M 9	72	M11	92	B12	112	D 5
13	F 2	33	N 2	53	N10	73	M12	93	A12	113	A 4
14	F 1	34	L 4	54	L 9	74	M13	94	C10	114	C 5
15	G 2	35	M 3	55	M10	75	G12	95	B11	115	D 4
16	G 3	36	N 3	56	N11	76	G11	96	A11	116	A 3
17	G 1	37	M 4	57	N12	77	G13	97	B10	117	A 2
18	H 1	38	L 5	58	L10	78	F13	98	C 9	118	C 4
19	H 2	39	N 4	59	M11	79	F12	99	A10	119	D 3
20	H 3	40	M 5	60	N13	80	F11	100	B 9	120	A 1

PIN COUNT	120
PART NUMBER	PGA120-STD <i>CHV. 433</i>



# SSM P/N PPG12003

PIN COUNT	FDI P/N	OUTER DIMENSION	CAVITY SIZE	CAVITY REMAINING	S. H. B. COLOR	S. H. B. OPENING	CORNER CHAMFER	PARTIAL DAN INNER DTH. * OUTER DTH.	COPPER FOIL THICKNESS
100 →	FGA100-STD	33.53 (1.320)	11.00 (.433)	1.2 (.047)	BLACK	14.00 (.551)	—	10.53*10.32 (.051*.701)	18um TYP.
	FGA-100U-C-300	33.50 (1.310)	7.02 (.300)	1.0 (.039)	GREEN	10.02 (.418)	1.0 (.039)	13.00*10.78 (.551*.601)	18um TYP.
	FGA-100U-C-325	33.53 (1.320)	8.20 (.325)	1.1 (.043)	GREEN	11.20 (.433)	1.0 (.039)	13.00*10.78 (.551*.601)	18um TYP.
	FGA-100U-C-305	33.53 (1.320)	8.27 (.305)	1.2 (.047)	BLACK	12.30 (.484)	—	13.00*10.78 (.551*.601)	18um TYP.
	FGA-100U-C-433	33.53 (1.320)	11.00 (.433)	1.0 (.039)	GREEN	14.00 (.551)	1.0 (.039)	10.53*10.32 (.051*.701)	18um TYP.
	FGA-100U-C-450	33.53 (1.320)	11.43 (.450)	1.1 (.043)	GREEN	14.43 (.568)	1.0 (.039)	10.53*10.32 (.051*.701)	18um TYP.
108	FGA108-STD	30.48 (1.200)	10.50 (.413)	1.2 (.047)	BLACK	12.50 (.492)	—	13.00*10.78 (.551*.601)	18um TYP.
120	FGA120-STD	33.53 (1.320)	11.00 (.433)	1.2 (.047)	BLACK	14.00 (.551)	—	10.53*10.32 (.051*.701)	18um TYP.
	FGA-120U-C-340	33.53 (1.320)	8.04 (.340)	1.2 (.047)	BLACK	11.00 (.457)	—	13.00*10.78 (.551*.601)	18um TYP.
	FGA-120U-C-375	33.53 (1.320)	9.53 (.375)	1.1 (.043)	GREEN	12.53 (.403)	1.0 (.039)	13.00*10.78 (.551*.601)	18um TYP.
	FGA-120U-C-433	33.00 (1.200)	11.00 (.433)	1.2 (.047)	GREEN	14.00 (.551)	—	10.53*10.32 (.051*.701)	18um TYP.
132	FGA132-STD	35.50 (1.400)	11.50 ( <del>.433</del> 453)	1.2 (.047)	BLACK	14.50 (.571)	—	10.53*10.32 (.051*.701)	18um TYP.
144 →	FGA144-STD	40.00 (1.575)	12.00 (.472)	1.2 (.047)	BLACK	15.00 (.591)	—	10.53*10.32 (.051*.701)	18um TYP.
	FGA-144U-C-380	38.48 (1.515)	9.05 (.380)	1.2 (.047)	BLACK	12.00 (.406)	—	13.00*10.78 (.551*.601)	18um TYP.
	FGA-144U-C-433	38.48 (1.515)	11.00 (.433)	1.1 (.043)	GREEN	14.00 (.551)	1.0 (.039)	10.53*10.32 (.051*.601)	18um TYP.
	FGA-144U-C-450	38.80 (1.530)	11.43 (.450)	1.1 (.043)	GREEN	15.40 (.600)	1.0 (.039)	10.53*10.32 (.051*.701)	18um TYP.
	FGA-144U-C-585	38.48 (1.515)	14.35 (.505)	1.2 (.047)	BLACK	17.40 (.685)	1.0 (.039)	—	18um TYP.
	FGA-144U-C-700	38.48 (1.515)	17.78 * 17.05	1.1 (.043)	GREEN	20.30*20.25	1.0 (.039)	—	18um TYP.



www.spectrum-semi.com Phone: 408-435-5555 Fax: 408-435-8226