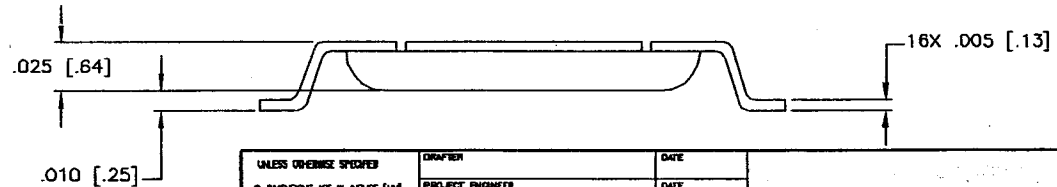
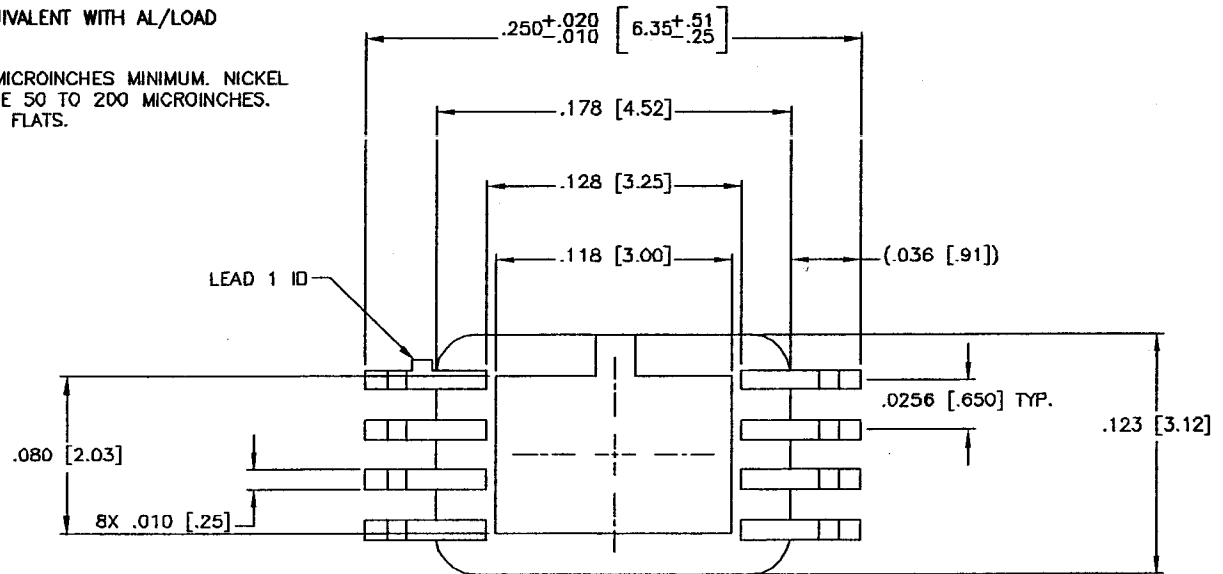


SSM P/N CS0008P4

NOTES, UNLESS OTHERWISE SPECIFIED:

1. MATERIAL:
LEADS: F-15 ALLOY
GLASS: 7052 OR EQUIVALENT WITH AL/LOAD
2. PLATING:
GOLD SHALL BE 50 MICROINCHES MINIMUM. NICKEL
UNDERPLATE SHALL BE 50 TO 200 MICROINCHES.
MEASURED ON MAJOR FLATS.



<small>UNLESS OTHERWISE SPECIFIED</small> • DIMENSIONS ARE IN INCHES (MM) • TOLERANCES: ANGLES +/- 1 DEG 4 PL DECIMALS +/- .0005 (.012) 3 PL DECIMALS +/- .001 (.025) 2 PL DECIMALS +/- .01 (.25)	DRAWER	DATE	8 LEAD GULLWING, TSSOP-8 SIZE NONE CODE A OHZT6 DRAWING NO GW2017G-2 REV A SCALE NONE GW2017G-2 revA SHEET 1 OF 1	
	PROJECT ENGINEER	DATE		
	CHECKER	DATE		
	MARKING	DATE		
	DATE	DATE		

