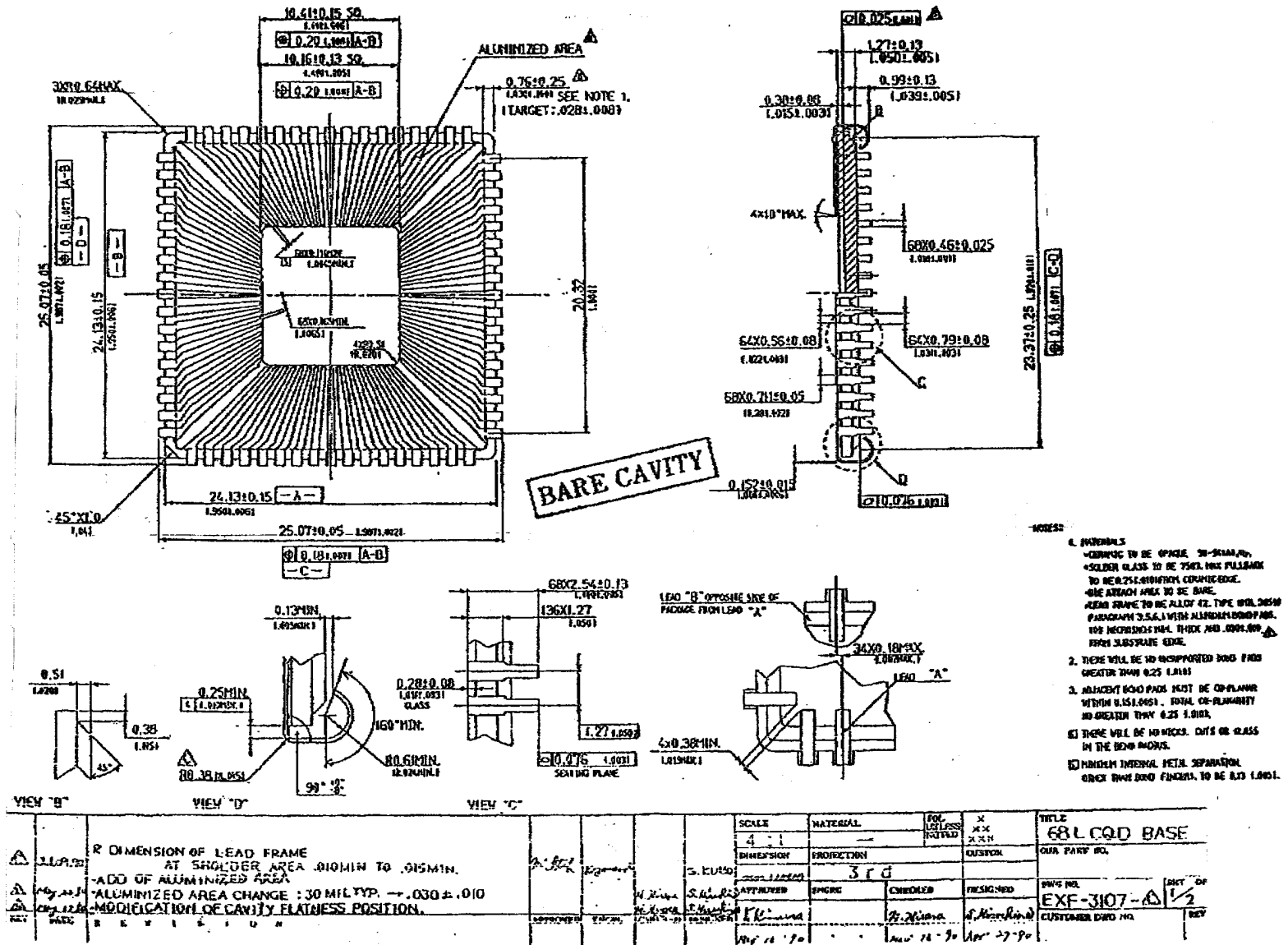
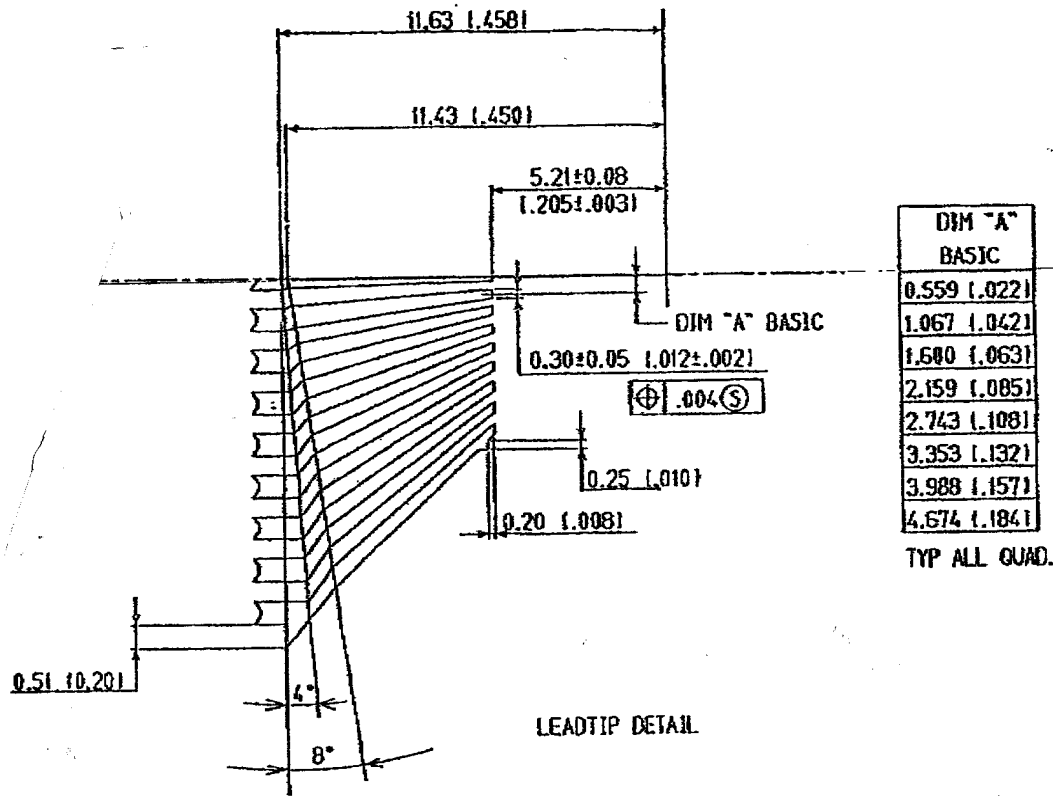


SSM P/N CQJ06828



SSM P/N CQJ06828



**BARE CAVITY**

| DIM "A"<br>BASIC |
|------------------|
| 0.559 (1.022)    |
| 1.067 (1.042)    |
| 1.680 (1.063)    |
| 2.159 (1.085)    |
| 2.743 (1.108)    |
| 3.353 (1.132)    |
| 3.988 (1.157)    |
| 4.674 (1.184)    |

TYP ALL QUAD.

LEAD TIP DETAIL

|                    |          |           |           |                  |         |
|--------------------|----------|-----------|-----------|------------------|---------|
| SCALE              | MATERIAL | TOL. INT. | XX        | TITLE            | 681 000 |
| 1                  |          |           | XX        | LEAD TIP DETAIL  |         |
| ORIENTATION        | ANGLE    | CUSTOM    |           | SUR. PART NO.    |         |
| FINCH              | 3rd      |           |           |                  |         |
| APPROVED           | EDGHS    | CHECKED   | DESIGNED  | DWG NO.          | REV     |
| K. K...            | K. K...  | S. S...   |           | EXF-3107-Δ       | 2/2     |
| REV 15-70/By 15-70 |          |           | REV 11-70 | CUSTOMER DWG NO. |         |

