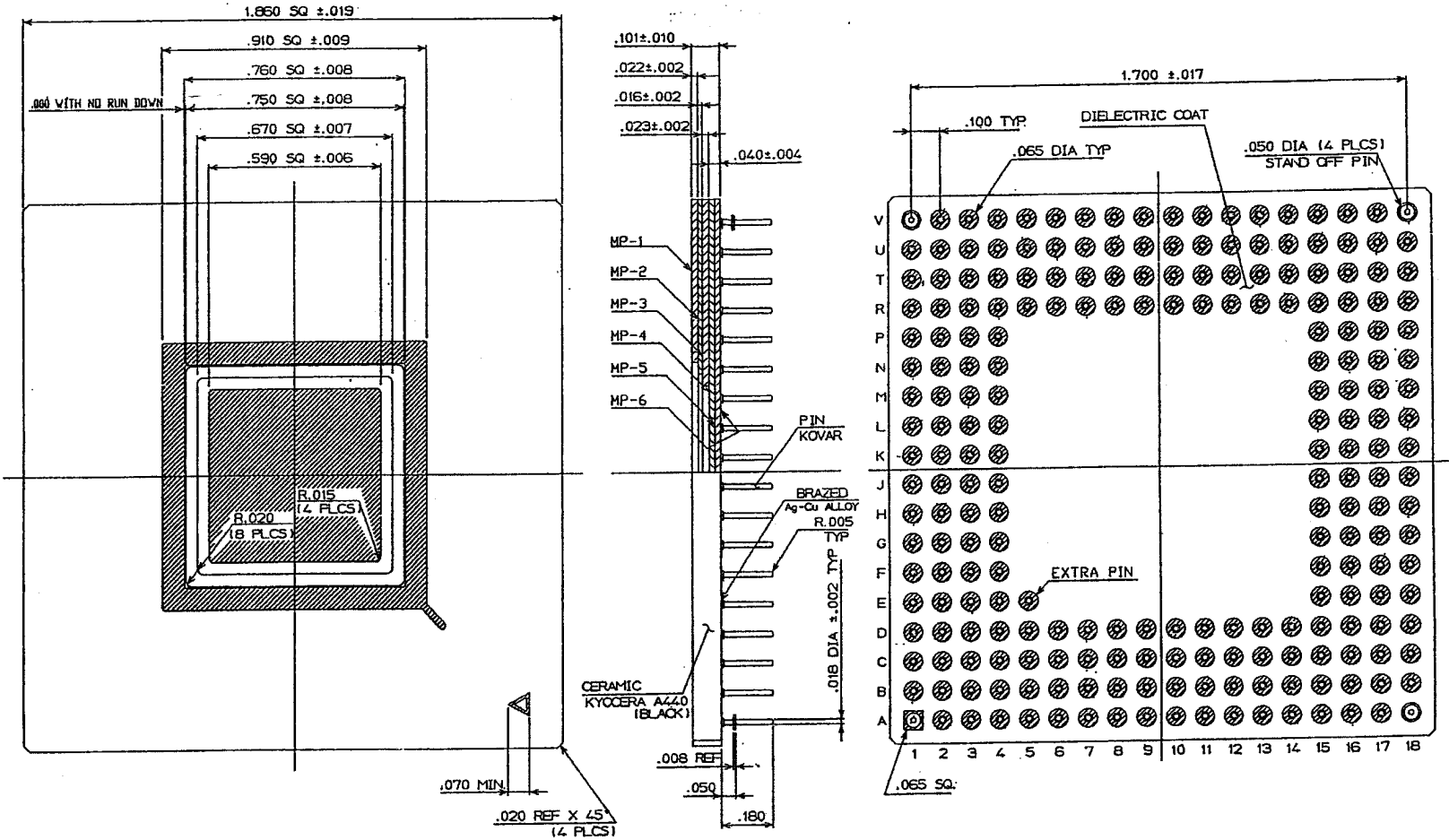


# SSM P/N CPG22413



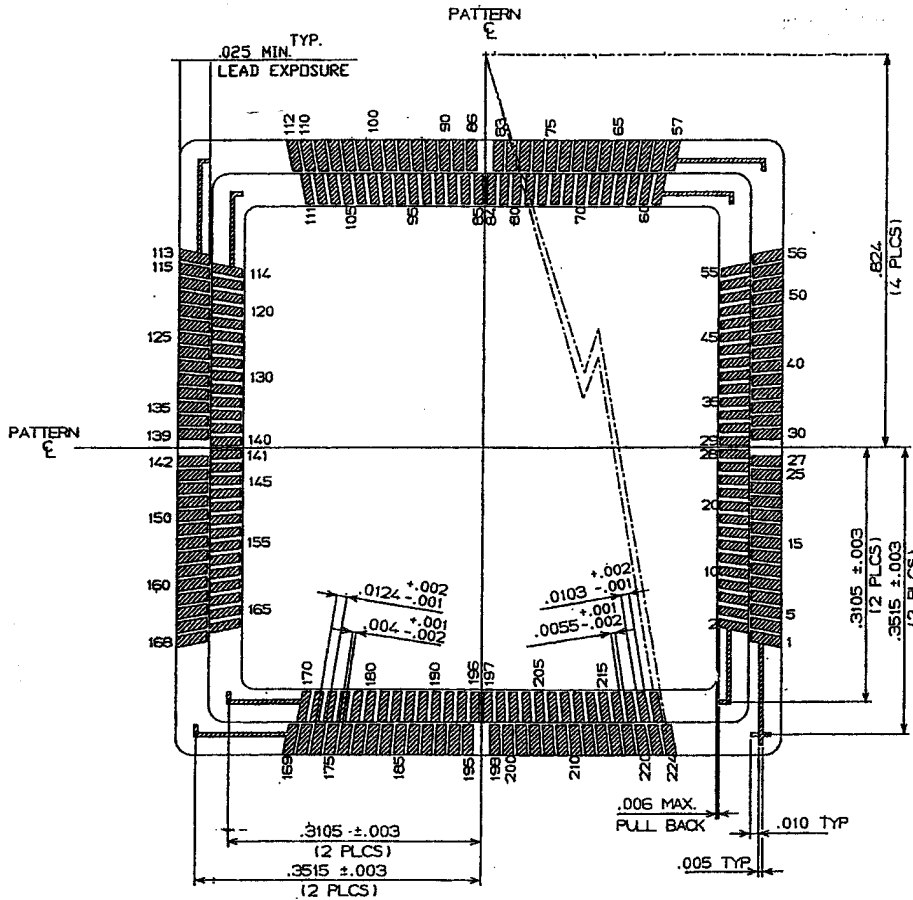
**NOTES :**

1. PLATING THICKNESS TO BE PER CUSTOMER'S SPECIFICATION.
2. SEAL RING AREA TO BE METALLIZED.
3. DIE ATTACH AREA TO BE METALLIZED.
4. SEAL RING AND DIE ATTACH PAD TO BE FLOATING FROM ANY PINS.
5. LEAD RESISTANCE : ALL OTHERS --- 1200 mΩ MAX.
6. REFERENCE VENDOR KYOCERA KD-P40611

UNLESS OTHERWISE SPECIFIED DIMENSIONAL TOLERANCES		TITLE	
.005 ±/- .005 .000X ±/- .001 .0000X ±/- .00005		224 CERAMIC PIN GRID ARRAY	
DRAFTER	DATE	CAVITY 0.590	
ENGINEER	DATE	DWG NO.	REV. 0
APPROVAL	DATE	SCALE	SHEET 1 OF 3



# SSM P/N CPG22413



LOWER TIER BOND FINGERS AND POSITIONS				
ANGLE	CENTER	START	END	B/F NUMBER
0.404	0.0079	0.0028	0.0130	28,29,84,85,140,141,186,197
1.211	0.0237	0.0185	0.0288	26,31,82,87,138,143,194,201
2.018	0.0394	0.0343	0.0445	24,33,80,89,136,145,192,201
2.825	0.0552	0.0501	0.0603	22,35,78,91,134,147,190,203
3.631	0.0710	0.0659	0.0761	20,37,76,93,132,149,188,205
4.437	0.0868	0.0817	0.0919	18,39,74,95,130,151,186,207
5.242	0.1027	0.0975	0.1079	16,41,72,97,128,153,184,209
6.046	0.1185	0.1133	0.1237	14,43,70,99,126,155,182,211
6.849	0.1344	0.1292	0.1395	12,45,68,101,124,157,180,213
7.651	0.1503	0.1451	0.1555	10,47,66,103,122,159,178,215
8.451	0.1663	0.1611	0.1715	8,49,64,105,120,161,176,217
9.250	0.1822	0.1770	0.1874	6,51,62,107,118,163,174,219
10.047	0.1983	0.1931	0.2035	4,53,60,109,116,165,172,221
10.842	0.2143	0.2091	0.2198	2,55,58,111,114,167,170,223

UPPER TIER BOND FINGERS AND POSITIONS				
ANGLE	CENTER	START	END	B/F NUMBER
0.808	0.0163	0.0101	0.0225	27,30,83,86,139,142,195,198
1.616	0.0327	0.0265	0.0389	25,32,81,88,137,144,193,200
2.424	0.0491	0.0429	0.0553	23,34,79,90,135,146,191,202
3.231	0.0654	0.0592	0.0716	21,35,77,92,133,148,189,204
4.038	0.0818	0.0756	0.0880	19,38,75,94,131,150,187,206
4.844	0.0982	0.0920	0.1044	17,40,73,96,129,152,185,208
5.649	0.1146	0.1084	0.1208	15,42,71,98,127,154,183,210
6.453	0.1311	0.1249	0.1373	13,44,69,100,125,156,181,212
7.256	0.1476	0.1414	0.1538	11,46,67,102,123,158,179,214
8.058	0.1641	0.1579	0.1703	9,48,63,104,121,160,177,216
8.858	0.1806	0.1744	0.1868	7,50,63,106,119,162,175,218
9.657	0.1972	0.1909	0.2035	5,52,61,108,117,164,173,220
10.454	0.2138	0.2075	0.2201	3,54,59,110,115,166,171,222
11.249	0.2305	0.2242	0.2368	1,56,57,112,113,168,169,224

UNLESS OTHERWISE SPECIFIED DIMENSIONAL TOLERANCES		TITLE
.001 ± .005		
.002 ± .001		
.003 ± .005		CAVITY 0.590
DRAFTER	DATE	
ENCLOSURE	DATE	DWG NO.
<i>Jim Chay</i>	10/13/90	
APPROVAL	DATE	REV.
		0
APPROVAL	DATE	SCALE
		SHEET 2 OF 3



# SSM P/N CPG22413

## WIRE BOND PAD / CONNECTOR PIN INTERCONNECTION PLAN

W/B NO.	PIN NO.	W/B NO.	PIN NO.	W/B NO.	PIN NO.	W/B NO.	PIN NO.	W/B NO.	PIN NO.	W/B NO.	PIN NO.	W/B NO.	PIN NO.	W/B NO.	PIN NO.	W/B NO.	PIN NO.
1	B2	27	J3	53	T2	79	UB	105	U15	131	M17	157	E17	183	A14	209	B6
2	A1	28	J2	54	U1	80	V8	106	V16	132	L15	158	D18	184	B13	210	C6
3	D3	29	K1	55	T3	81	V9	107	T15	133	M18	159	E16	185	A13	211	D7
4	E4	30	K2	56	R4	82	R9	108	R14	134	L16	160	F15	186	C12	212	A5
5	C2	31	K3	57	U2	83	T9	109	U16	135	L17	161	D17	187	B12	213	B5
6	B1	32	K4	58	V1	84	L9	110	V17	136	L18	162	C18	188	D11	214	A4
7	C1	33	L1	59	T4	85	V10	111	T16	137	K18	163	D16	189	A12	215	C5
8	F4	34	L2	60	R5	86	U10	112	R15	138	K15	164	E15	190	C11	216	D6
9	E3	35	L3	61	U3	87	T10	113	U17	139	K16	165	C17	191	B11	217	B4
10	D2	36	M1	62	V2	88	R10	114	V18	140	K17	166	B18	192	A11	218	A3
11	D1	37	M2	63	V3	89	V11	115	R16	141	J18	167	C16	193	A10	219	C4
12	E2	38	L4	64	R6	90	U11	116	P15	142	J17	168	D15	194	D10	220	D5
13	F3	39	M3	65	T5	91	T11	117	T17	143	J16	169	B17	195	C10	221	B3
14	G4	40	N1	66	U4	92	V12	118	U18	144	J15	170	A18	196	B10	222	A2
15	E1	41	N2	67	V4	93	U12	119	T18	145	H18	171	C15	197	A9	223	C3
16	F2	42	N3	68	L5	94	R11	120	N15	146	H17	172	D14	198	B9	224	D4
17	F1	43	M4	69	T6	95	T12	121	P16	147	H16	173	B16	199	C9		
18	G3	44	P1	70	R7	96	V13	122	R17	148	G18	174	A17	200	D9	S/R	NC
19	G2	45	P2	71	V5	97	U13	123	R18	149	G17	175	A16	201	A8	D/A	NC
20	H4	46	R1	72	U6	98	T13	124	P17	150	H15	176	D13	202	B8	ES	NC
21	G1	47	P3	73	V6	99	R12	125	M16	151	G16	177	C14	203	C8		
22	H3	48	N4	74	T7	100	V14	126	M15	152	F18	178	B15	204	A7		
23	H2	49	R2	75	U7	101	U14	127	P18	153	F17	179	A15	205	B7		
24	H1	50	T1	76	R8	102	V15	128	N17	154	F16	180	B14	206	D8		
25	J1	51	R3	77	V7	103	T14	129	N18	155	G15	181	C13	207	C7		
26	J4	52	P4	78	T8	104	R13	130	M16	156	E18	182	D12	208	A6		

UNLESS OTHERWISE SPECIFIED DIMENSIONAL TOLERANCES			
<small>300X +/- .005 150X +/- .003 3000X +/- .00005</small>		TITLE	
DRAFTER	DATE	224 CERAMIC PIN GRID ARRAY	
ENGINEER	DATE	CAVITY 0.590	
APPROVAL	DATE	DWG NO.	REV. 0
APPROVAL	DATE	SCALE	SHEET 3 OF 3

