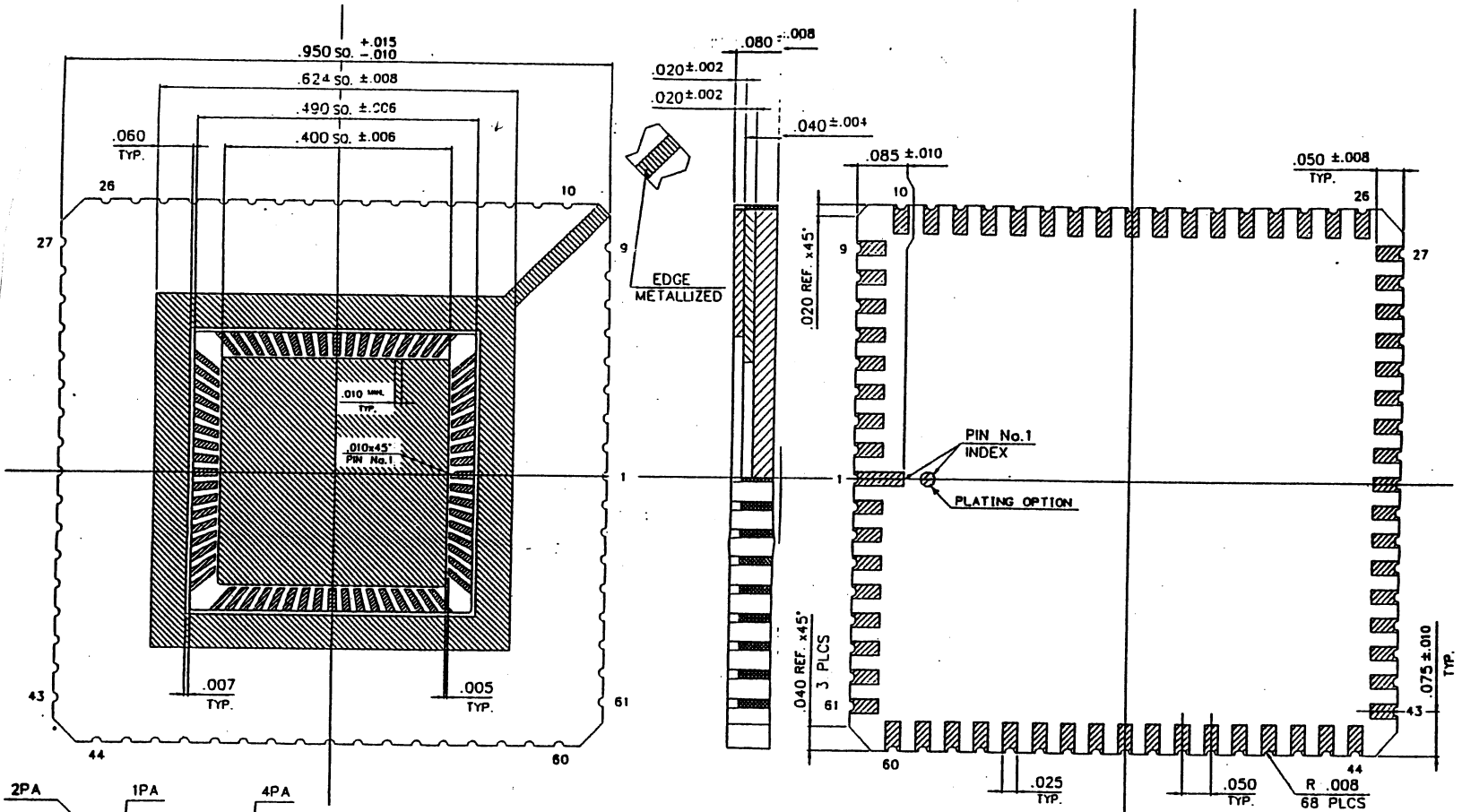


SSM P/N LCC06860



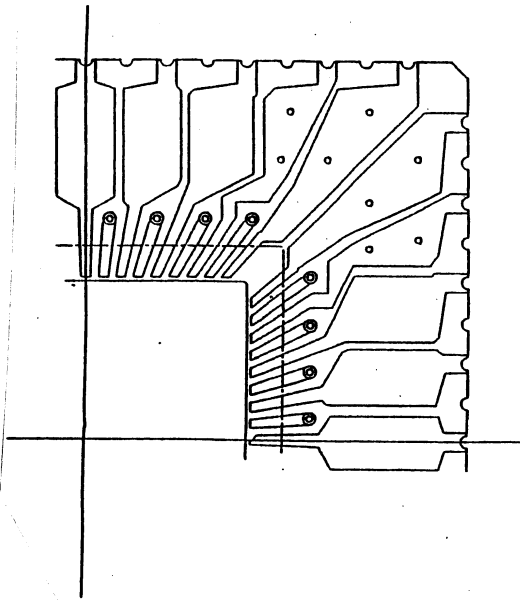
- NOTES:
1. ALL EXPOSED METALLIZED AREA SHALL BE GOLD PLATED 60 MICRO INCHES MIN. THK. OVER NICKEL PLATING. UNLESS OTHERWISE SPECIFIED IN PURCHASE ORDER.
 2. SEAL RING FLATNESS .003 MAX.
 3. SEAL RING AND DIE ATTACH PAD ARE NOT GROUND TO A LEAD. (ZERO GROUND)
 4. LEAD RESISTANCE $0.18 \Omega \text{ MAX.}$

LCC68S2
 SI-20184 REV **
 ECH 239

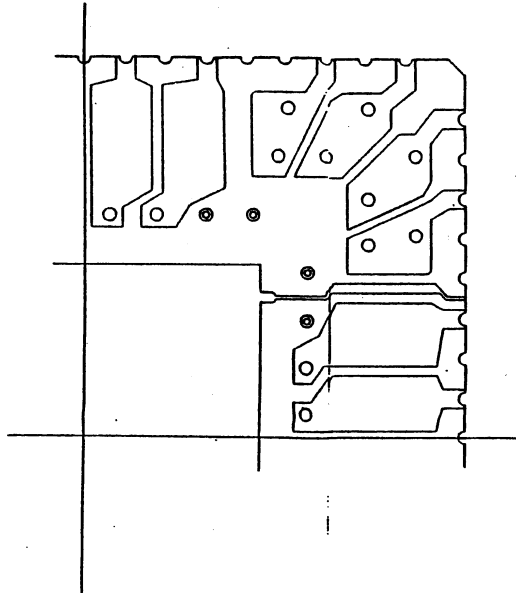
MODIFICATIONS	CHANGE	DATE	BY	DRWN	CHECKED	APPROVED	NAME	68 LCC (.400 SQ. CAV.)	TOLERANCES UNLESS OTHERWISE SPECIFIED	±.005	MATERIAL	KYOCERA A-440	DATE	10-03-'91
							KYOCERA	KYOCERA CORPORATION	DRIVING IN					
							KYOTO JAPAN							



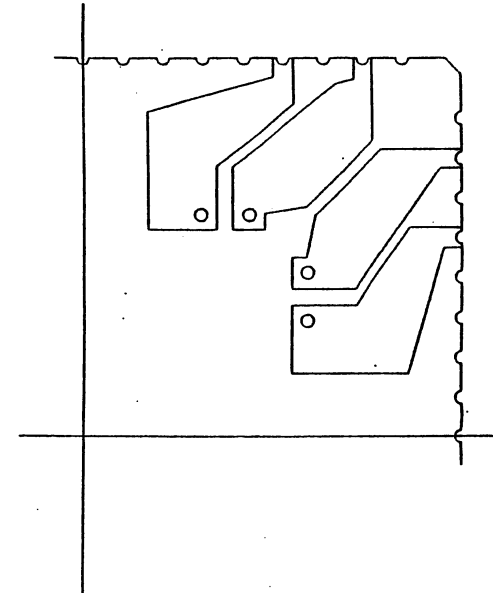
SSM P/N LCC06860



2PA PATTERN



3PA PATTERN



4PA PATTERN

LCC68S2

5I-20184 REV **

ECN 239

MODIFICATIONS					NAME	68 LCC	PRECISION	DRAWN	CHECKED	APPROVED	DATE	
					SCALE	10/1	TOLERANCE	T.OSAKO	A.Y.	S.S.	Y.S.	10-03-'91
					MATERIAL		± .005					
	CHANGE	DATE	DRAWN	CHECKED	APPROVED		KYOCERA CORPORATION KYOTO JAPAN	DRAWING NO.	PB-02662		SHEET	3/3

