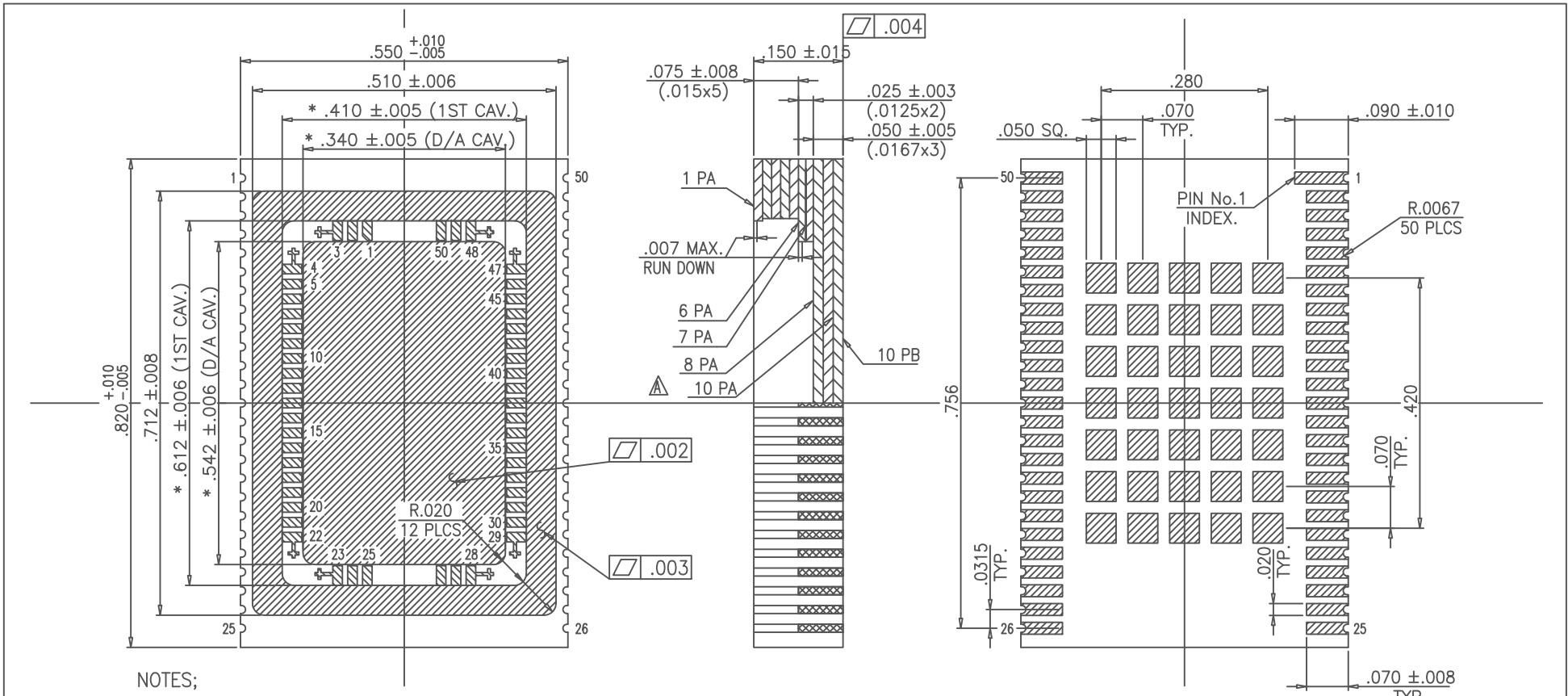


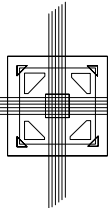
# SSM P/N LCC05001



**NOTES;**

1. ALL EXPOSED METALLIZED AREA SHALL BE GOLD PLATED 100 MICRO INCHES MIN. THK. OVER NICKEL PLATE 100 MICRO INCHES NOMINAL THK..
2. SEAL AREA AND DIE ATTACH SHALL BE ELECTRICALLY ISOLATED FROM ALL LEAD. (ZERO GROUND)
3. FLATNESS METALLIZED PADS ONLY.
4. \* INDICATES DIMENSION OF THE TOP LAYER.

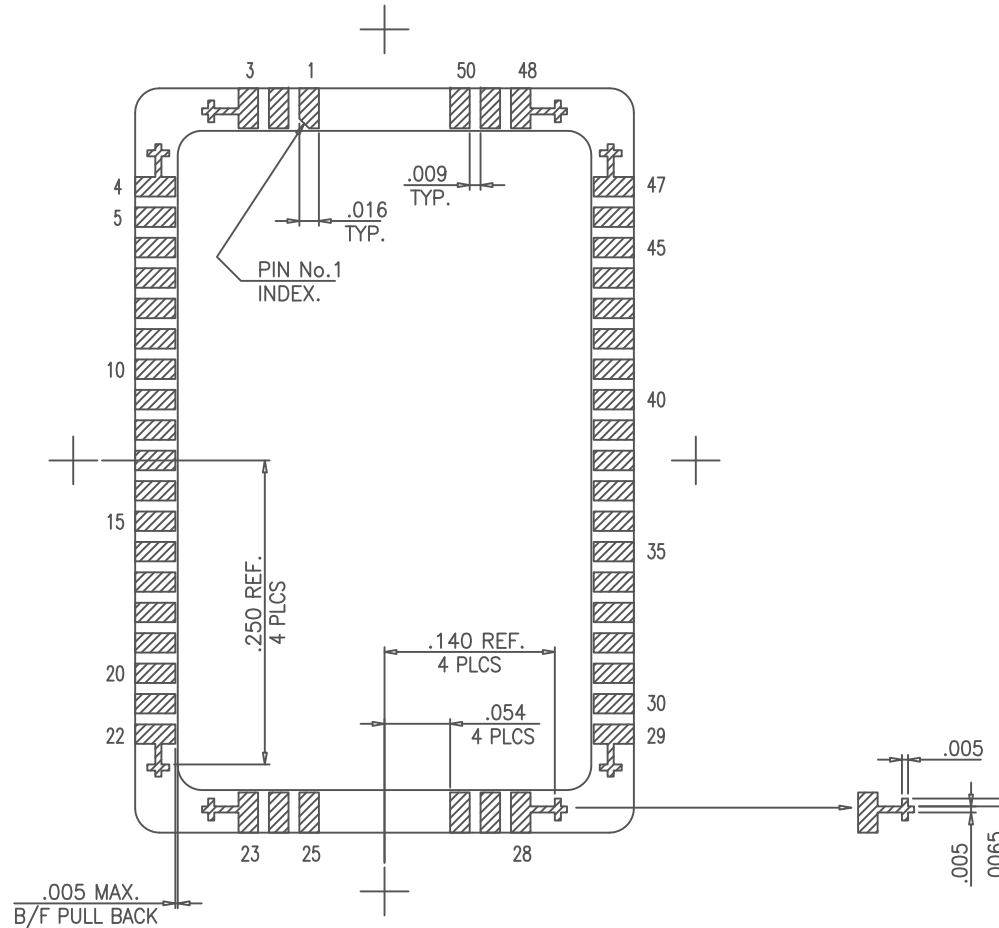
MODIFICATIONS					NAME 50 LCC (.340x.542 CAV.)		TOLERANCES: UNLESS OTHERWISE SPECIFIED		CAU-50-01			
					SCALE 6/1		MATERIAL KYOCERA A-440		± .005		THIRD ANGLE PROJECTION	
△ ADDED : 10 PA (PATTERN AND VIA) CHANGE					DATE MAR,27,'97	DRAWN S.H	CHECKED H.U/M.Y	APPROVED M.S	DRAWN H.U	CHECKED A.Y	APPROVED M.S	DATE DEC.06.'96
					KYOCERA CORPORATION KYOTO JAPAN		DRAWING NO. PB-C96499-A		SHEET 1/8			



**SPECTRUM**  
SEMICONDUCTOR MATERIALS, INC.

Ph: 408.435.5555 email: [ssm\\_sales@spectrum-semi.com](mailto:ssm_sales@spectrum-semi.com)

# SSM P/N LCC05001

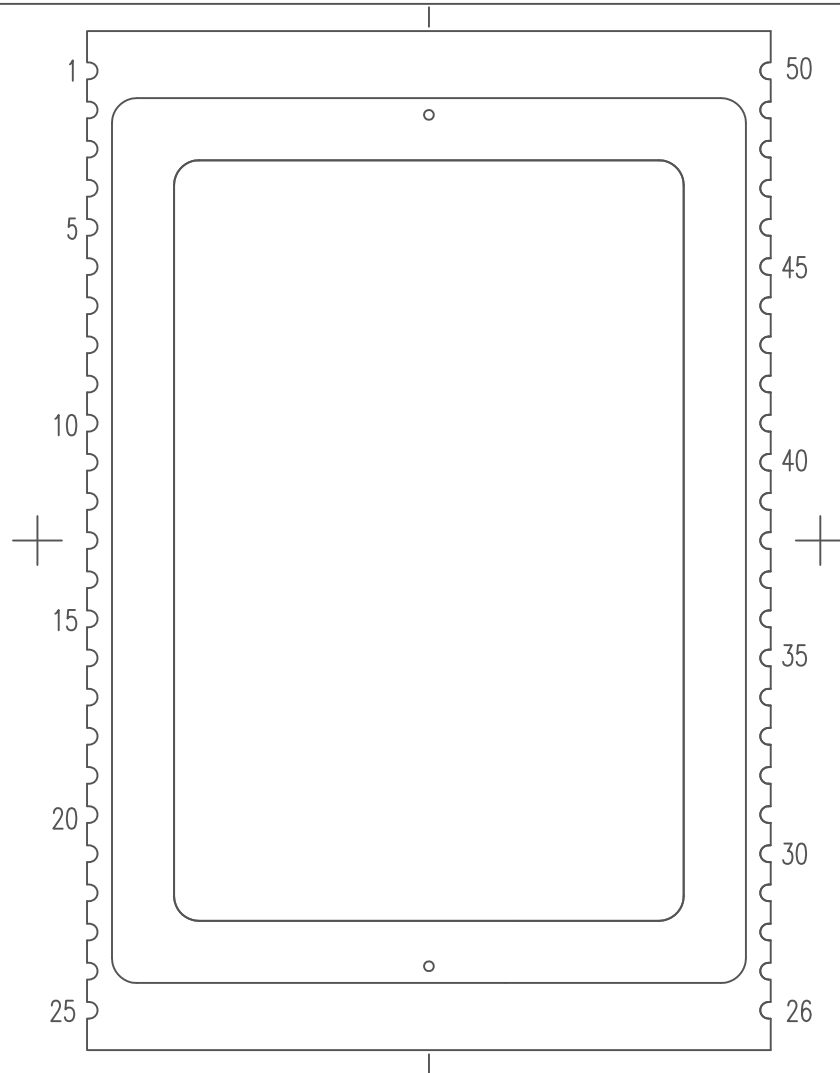


MODIFICATIONS						NAME	50 LCC (.340x.542 CAV.)	TOLERANCES: UNLESS OTHERWISE SPECIFIED	DRAWN	CHECKED	APPROVED	DATE	
						SCALE	10 / 1	± .005	H.U	A.Y	M.Y	M.S	DEC.06.'96
						MATERIAL	KYOCERA A-440	THIRD ANGLE PROJECTION					
									DRAWING NO.	PB-C96499-A		SHEET	2 / 8
	CHANGE		DATE	DRAWN	CHECKED	APPROVED		KYOCERA CORPORATION KYOTO JAPAN					



Ph: 408.435.5555 email: [ssm\\_sales@spectrum-semi.com](mailto:ssm_sales@spectrum-semi.com)

# SSM P/N LCC05001



1 PA

MODIFICATIONS						NAME	50 LCC (.340x.542 CAV.)	TOLERANCES: UNLESS OTHERWISE SPECIFIED	DRAWN	CHECKED	APPROVED	DATE
						SCALE	10 / 1		H.U	A.Y / M.Y	M.S	DEC.06.'96
						MATERIAL		THIRD ANGLE PROJECTION				
	CHANGE	DATE	DRAWN	CHECKED	APPROVED	KYOCERA	KYOCERA CORPORATION KYOTO JAPAN	DRAWING NO.	PB-C96499-A		SHEET	3 / 8



Ph: 408.435.5555 email: [ssm\\_sales@spectrum-semi.com](mailto:ssm_sales@spectrum-semi.com)