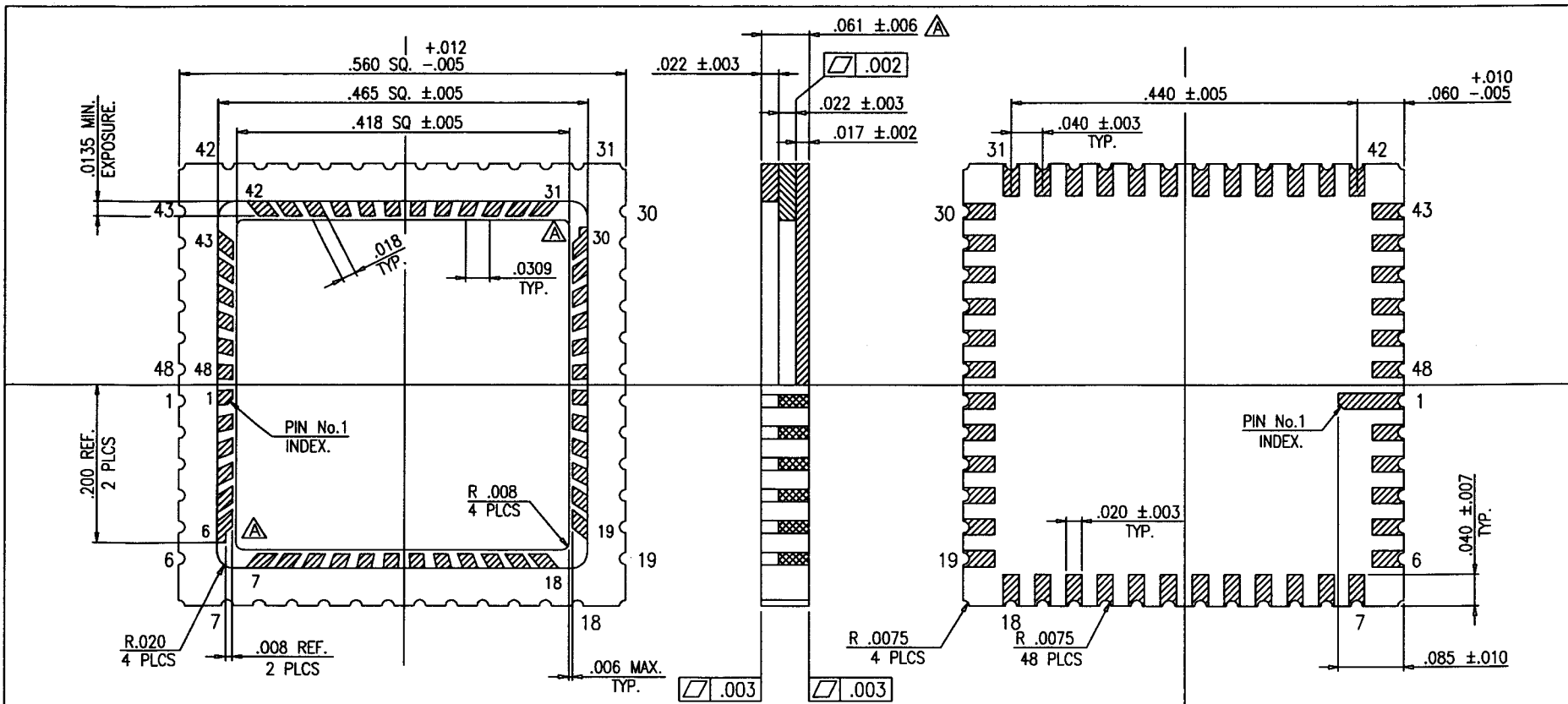


# SSM P/N LCC04832



- NOTES:
1. ALL EXPOSED METALLIZED AREA SHALL BE GOLD PLATED 20 MICRO INCHES MIN. THK. OVER NICKEL PLATE 50 MICRO INCHES MIN.
  2. SEAL AREA AND DIE ATTACH AREA SHALL BE WITHOUT METALLIZATION.

MODIFICATIONS						NAME	48 LCC (.418 SQ. CAV.)	TOLERANCES:	DRAWN	CHECKED	APPROVED	DATE	
						SCALE	8 / 1	$\pm .005$	UE.	H.M.	K.H.	M.S.	SEP.27.'00
						MATERIAL	KYOCERA A-440	THRU ANGLE PROJECTION					
	$\triangle$	CHANGED : TOLERANCES & 2PA PATTERN CHANGE	NOV.01.'00	M.H.	UE./K.H.	M.S.							
			DATE	DRAWN	CHECKED	APPROVED							
							<b>KYOCERA</b>	KYOCERA CORPORATION KYOTO JAPAN	DRAWING NO. PB-CA0F86-A			SHEET 1 / 3	