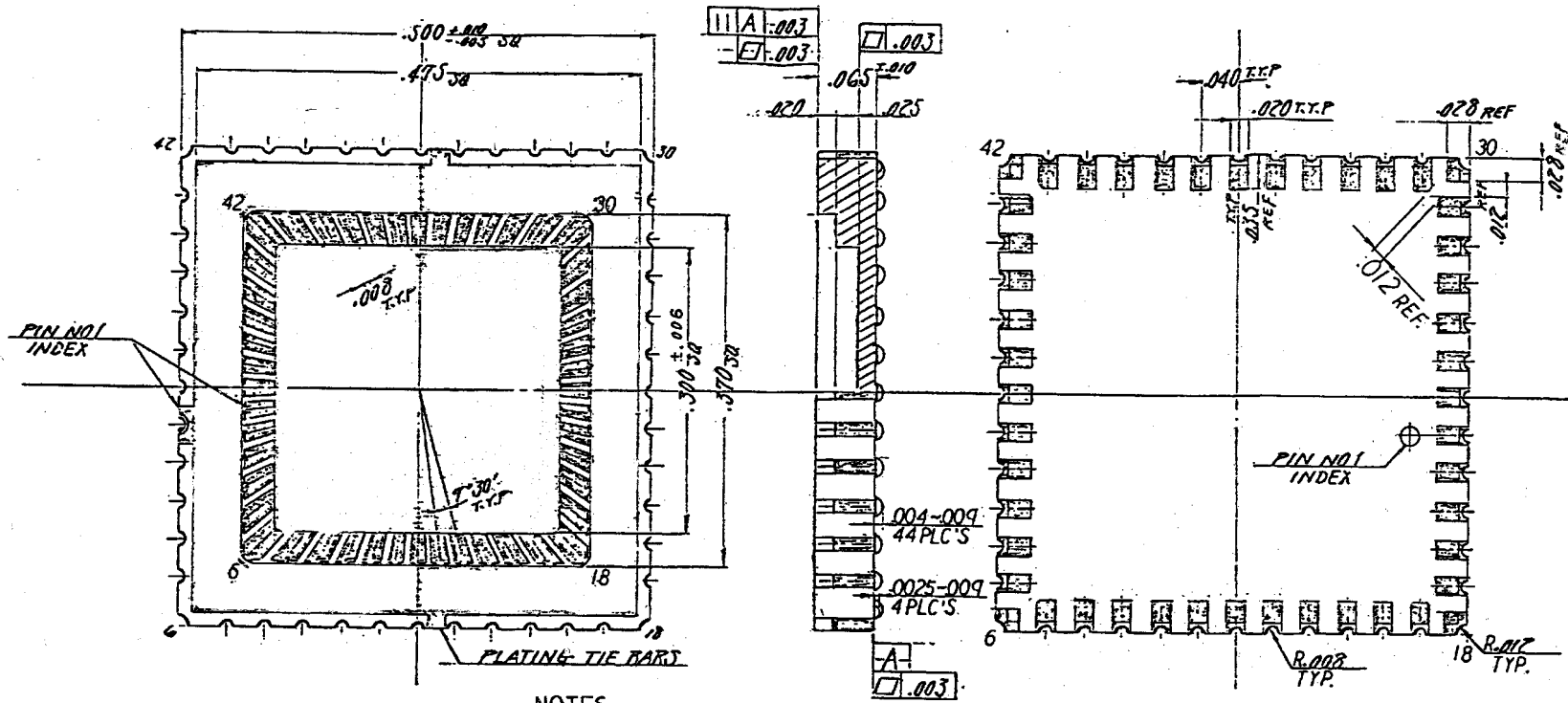


SSM P/N LCC04827



- NOTES
1. ALL EXPOSED METALLIZED AREA (INCLUDING TUNGSTEN BUMPS) SHALL BE GOLD PLATED WITH 60 MICRO INCHES MIN. THK. OVER NICKEL PLATED WITH 100 MICRO INCHES NOM. THK. UNLESS OTHERWISE SPECIFIED IN PURCHASE ORDER.
 2. FLATNESS METALLIZED PADS ONLY.
 3. SEAL AREA AND DIE ATTACH AREA SHALL BE ISOLATED FROM ANY LEADS.(ZERO GROUND)
 4. LEAD TO LEAD LEAKAGE MUST NOT EXCEED 10×10^{-9} AMPS AT 100V D.C.
 5. LEAD RESISTANCE: 0.5 OHMS MAX.

NAME (HCO-48V)		TOLERANCES:	DRAWN		CHECKED	
48LCC (.300 sq.) CAV.		UNLESS OTHERWISE SPECIFIED	S. Yamada		V. Shiro	
SCALE	MATERIAL	± 1 %	APPROVED		DATE	
8/1	KYOCERA A-473	N.L.T. ±.005	383		85-2-11	
KYOCERA CORPORATION		KYOTO JAPAN	DWG. # PB-55304-A			



www.spectrum-semi.com Phone: 408-435-5555 Fax: 408-435-8226