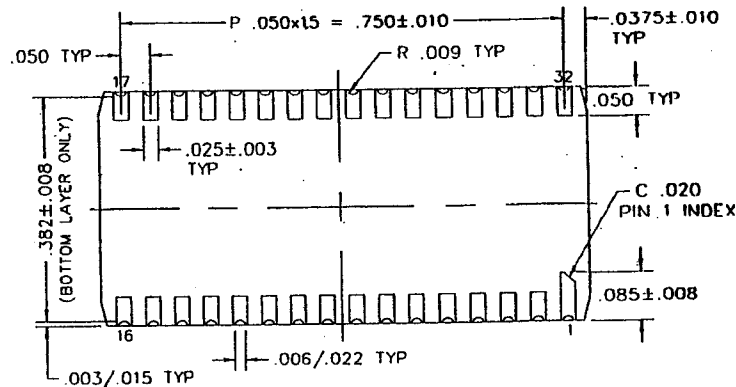
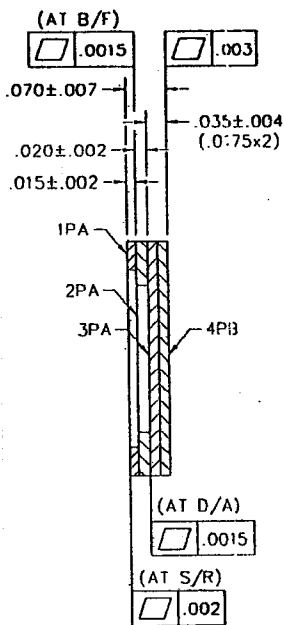
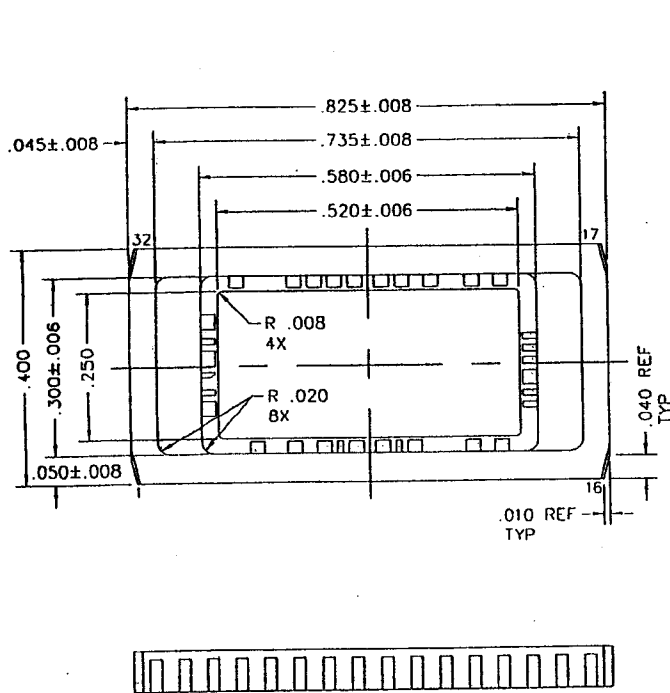


SSM P/N LCC03255



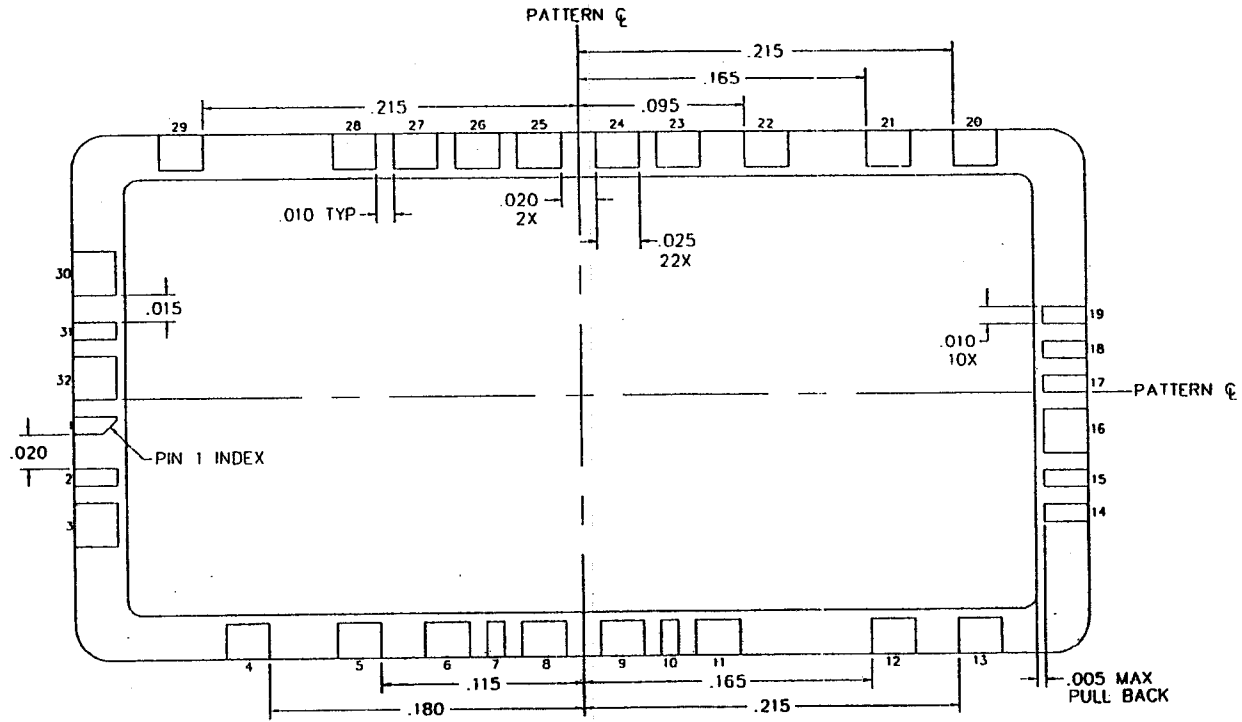
NOTES: (UNLESS OTHERWISE SPECIFIED)

1. PART SHALL CONFORM TO THE REQUIREMENTS
2. SEAL RING, D/A PAD, BOND FINGERS, CASTELLATIONS, AND SOLDER PADS SHALL BE PLATED 60µ" MIN GOLD THICKNESS OVER 100µ" MIN ELECTROLYTIC NICKEL THICKNESS.
3. SEAL RING & D/A AREA SHALL BE ELECTRICALLY ISOLATED FROM ANY LEAD.
4. LEAD RESISTANCE: 2.0Ω MAX.

LX 32 (.520 X .250)		SCALE 5/1
		SIZE B
STOCK NO. 16-044-032		REV 02
DO NOT SCALE DRAWING		SHEET 1 OF 2



SSM P/N LCC03255



LX 32 (.520 X .250)		SCALE 15/1
		SIZE B
STOCK NO. 16-044-032		REV 02
DO NOT SCALE DRAWING		SHEET 2 OF 2



www.spectrum-semi.com Phone: 408-435-5555 Fax: 408-435-8226