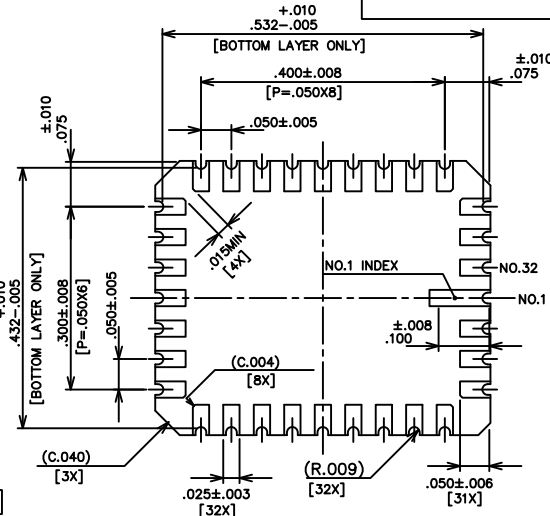
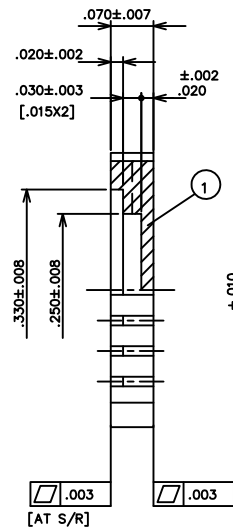
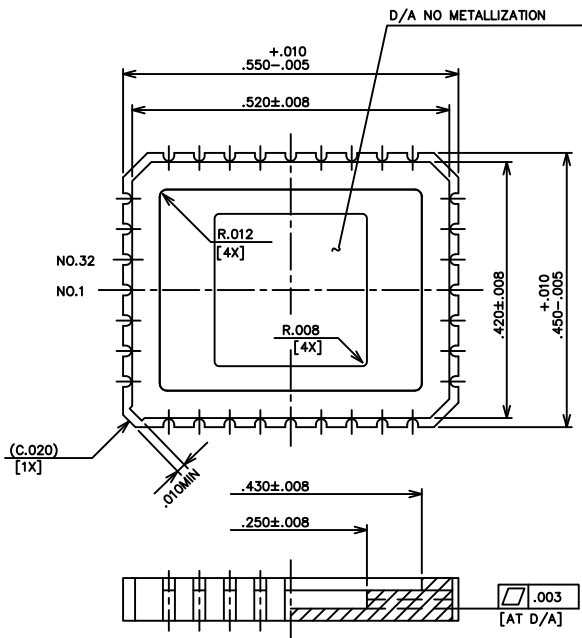




LATEST REVISION'S DESCRIPTION

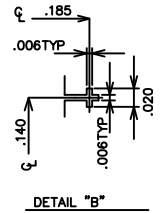
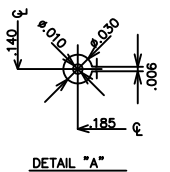
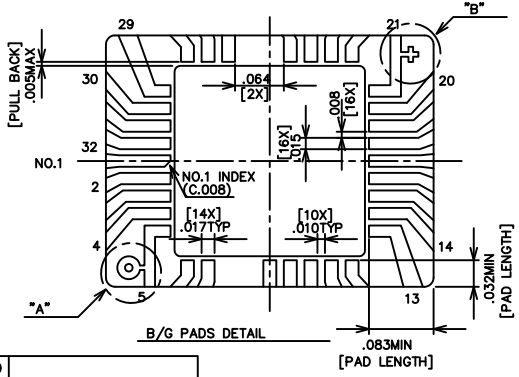
B ADDED NOTE 4 & CUSTOMER DRAWING NO.

REFERENCE DRAWING



NOTES:

1. GOLD PLATE 80? INCHES MIN OVER 80? INCHES MIN NICKEL.
2. SEAL RING TO BE ELECTRICALLY ISOLATED.
3. RESISTANCE: ----- 300m? MAX
4. CYPRESS SEMICONDUCTOR SPECIFICATION 05-00027 ? SHALL APPLY.



Item No.	Material	Description	Rev.	Description	Date
3				B RE DRAWING	MAR-3-1997
2				A RE DRAWING	FEB-21-1996
1	CERAMIC BLACK ALUMINA			NEW DRAWING	JAN-03-1996
UNLESS OTHERWISE SPECIFIED DRAWN Y.MATSUMOTO TOLERANCES: ± 1% N. L. T. 1/16 DECIMALS X.X ± 0.25 1/32 DECIMALS X.XX ± 0.13					
CUSTOMER			APPROVED	TITLE	
MUNO			Y.KACHI	32LD CHIP CARRIER	
DWG NO. 51-20263			UNIT 3/16 INCH	DWG NO. IRK32F1-5654B	
SCALE					

MODIFIED DWG NO.

PART NO. SHEET 1 OF 1

