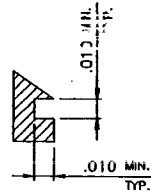
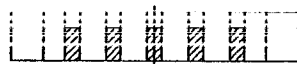
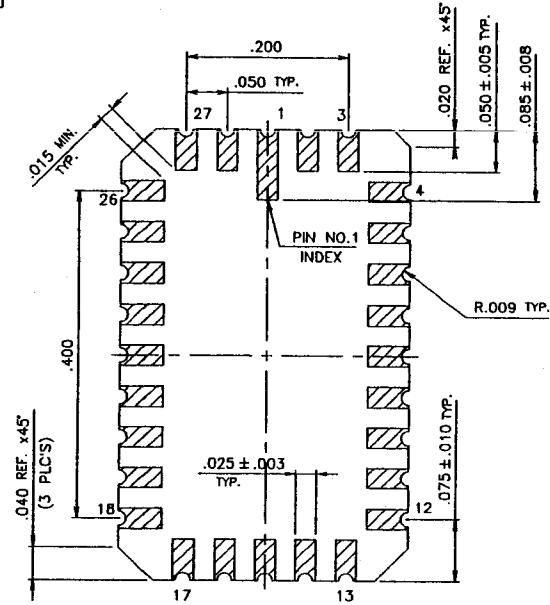
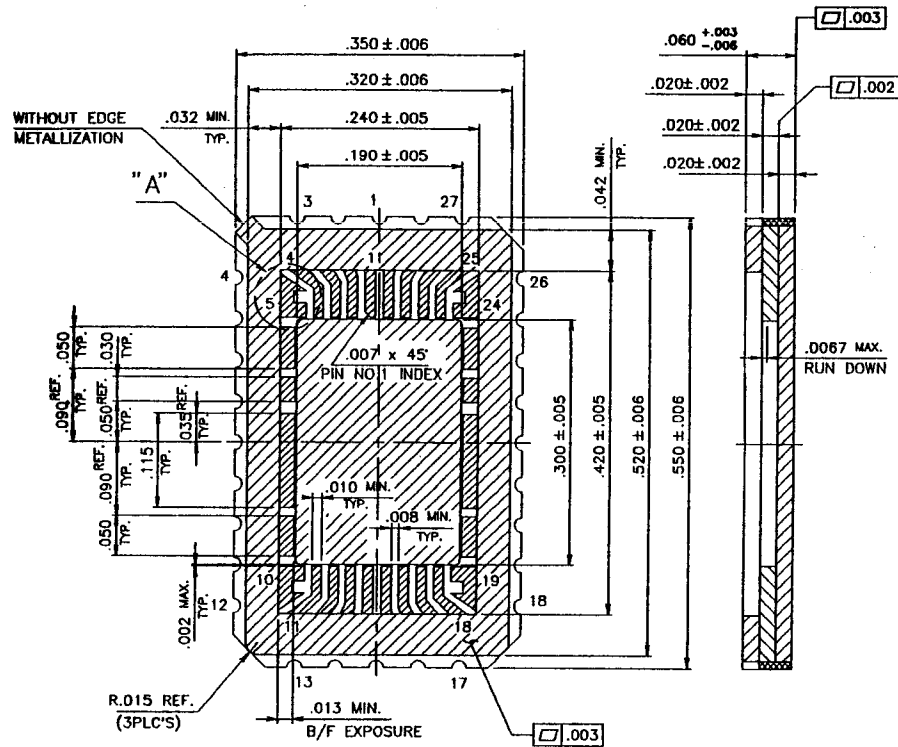


SSM P/N LCC02851



DETAIL "A"  
(SCALE FREE)

NOTES

1. ALL EXPOSED METALLIZED AREA SHALL BE GOLD PLATED 60 MICRO INCH MIN THK OVER NICKEL PLATED UNLESS OTHERWISE SPECIFIED PURCHASE ORDER.
2. FLATNESS METALLIZED PAD'S ONLY.
3. SEAL AREA AND DIE ATTACH AREA SHALL BE ISOLATED FROM ANY LEADS.(ZERO GROUND)

UNLESS OTHERWISE SPECIFIED		DESIGNED BY	MTK		
ALL DIMENSIONS ARE IN INCHES		DRAWN	HTN	DATE	02/11/00
STANDARD TOLERANCES DIA	ANGLES	CHEK BY		DATE	
	± 0.30				
MATERIAL		APPROVED BY	DATE	TITLE	
		APPROVED BY	DATE	28 R LCC 190 X 300	
FINISH				SIZE	PART NO.
				C	51-20066
				BVG NO.	REV
					*A
				SCALE	SHEET 1 OF 1
				10/1	

