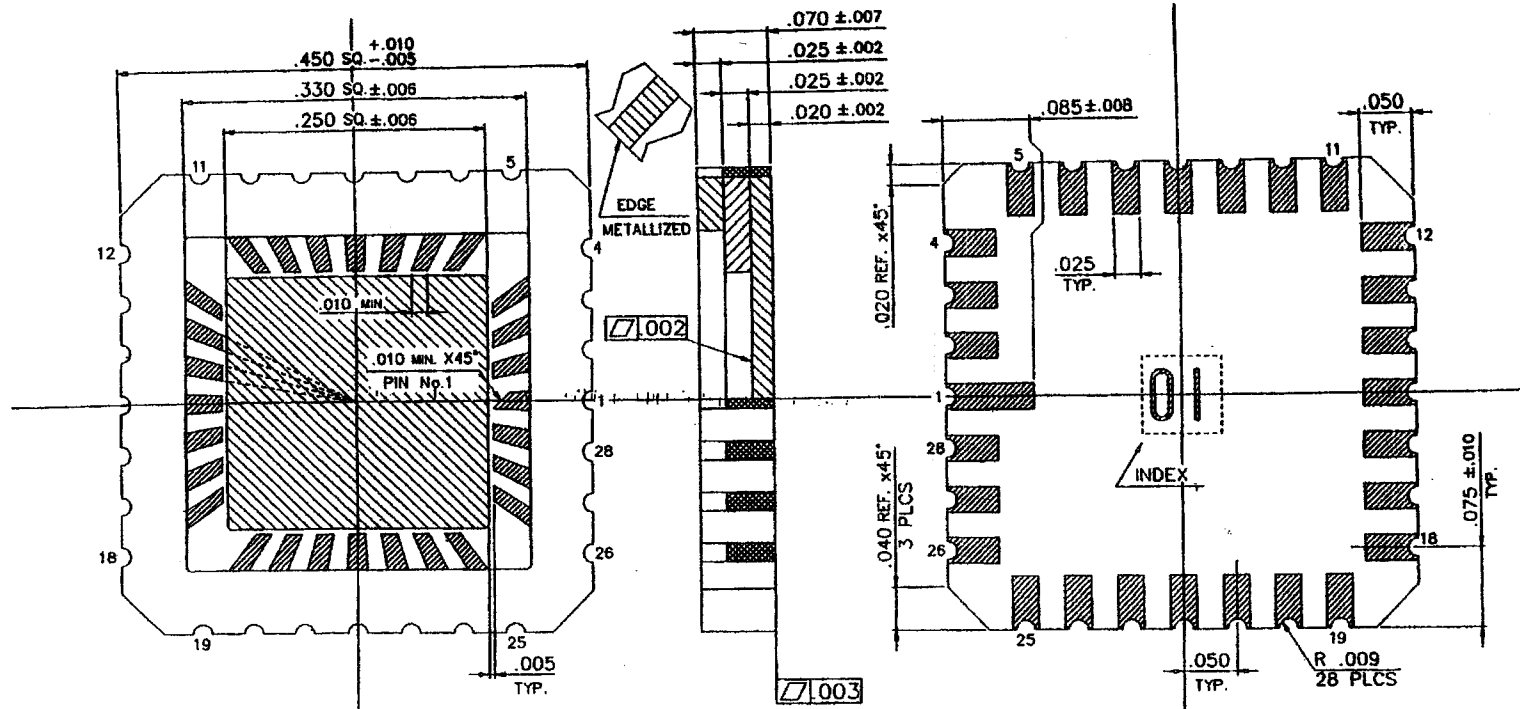


SSM P/N LCC02850



NOTES:

1. ALL EXPOSED METALLIZED AREA SHALL BE GOLD PLATED 60 MICRO INCHES MIN. THICKNESS OVER NICKEL PLATED UNLESS OTHERWISE SPECIFIED PURCHASE ORDER.
2. FLATNESS METALLIZED PADS ONLY.
3. DIE ATTACH AREA SHALL BE ISOLATED FROM ANY LEADS. (ZERO GROUND)

MODIFICATIONS						NAME	28 LCC (.250 SQ. CAV.)	TOLERANCES	± .005	DRAWN	T. OMURE	CHECKED	A. Y. K. T.	APPROVED	Y. S.	DATE	12-5-'91	CGM-28-02	S=N	D=0
						SCALE	10/1	MATERIAL	KYOCERA A-440	DRAWING NO.	PB-C91631		SHEET							
						CHANGE														
						DATE	DRAWN	CHECKED	APPROVED	KYOCERA		KYOCERA CORPORATION		KYOTO JAPAN						

PB-13046-A (HGA-28CZ) MOD.



www.spectrum-semi.com Phone: 408-435-5555 Fax: 408-435-8226