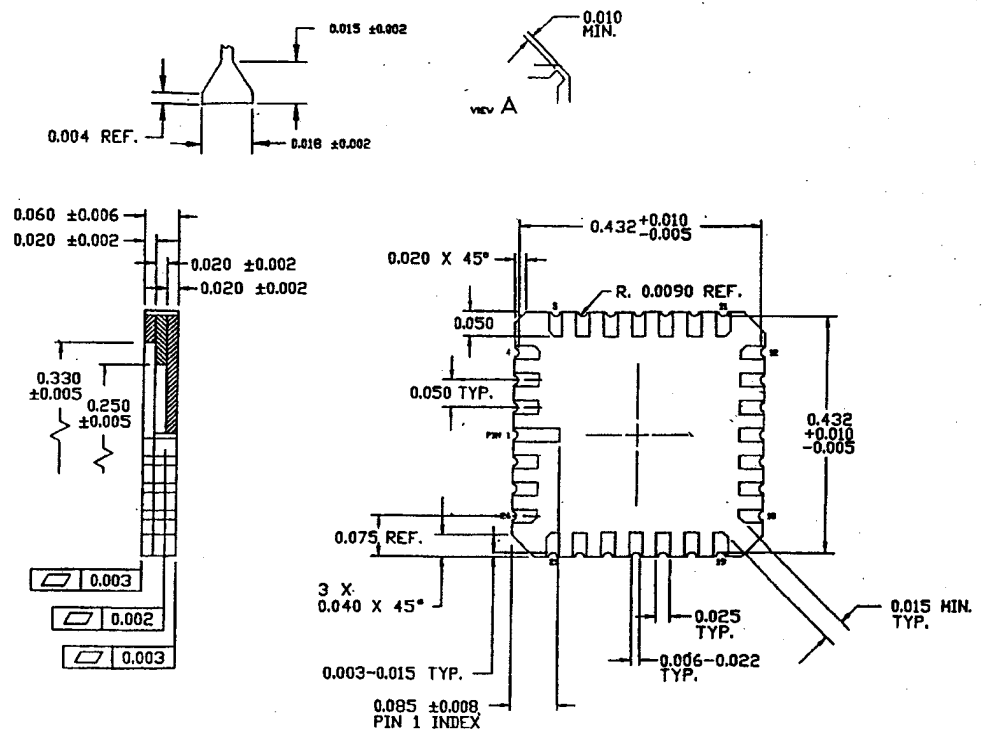
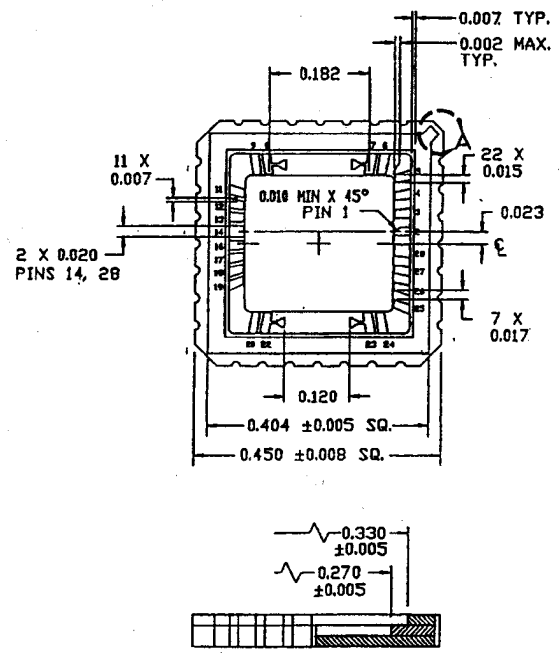


# SSM P/N LCC02803

**NOTES:**

1. INTERPRET DRAWING PER DOD-STD-100.
2. DIMENSIONS ARE TYPICAL FOR ALL QUADRANTS UNLESS OTHERWISE SPECIFIED.
3. FINISH: GOLD PLATE 80µ INCHES MIN. OVER 80µ INCHES MIN. NICKEL.
4. DIE ATTACH CAVITY AND SEAL RING WILL BE ELECTRICALLY ISOLATED.
5. ALL PARTS SHALL CONFORM TO SPECIFICATION NO. 03-00027.
6. EXTERNAL LEADS 1, 10, 15 AND 21 HAVE NO INTERNAL CONNECTION.

REVISIONS					
ZONE	REV	ECN	DESCRIPTION	DATE	APPROVED



UNLESS OTHERWISE SPECIFIED		DESIGNED BY	DATE		
ALL DIMENSIONS ARE IN INCHES		DRAWN	DATE		
STANDARD TOLERANCES IN:		JMB	06/27/90		
DECIMALS:	ANGLES:	CHK BY	DATE	TITLE 28 LD LCC 250 X 270 (4 X 10)	
XXX ± 0.003	±	APPROVED BY	DATE	SIZE B	PART NCL I
XXXX ± 0.0010		APPROVED BY	DATE	DWG NO	REV 3
MATERIAL				SCALE 5 X	SHEET 1 OF 1
FINISH SEE NOTE 3					

