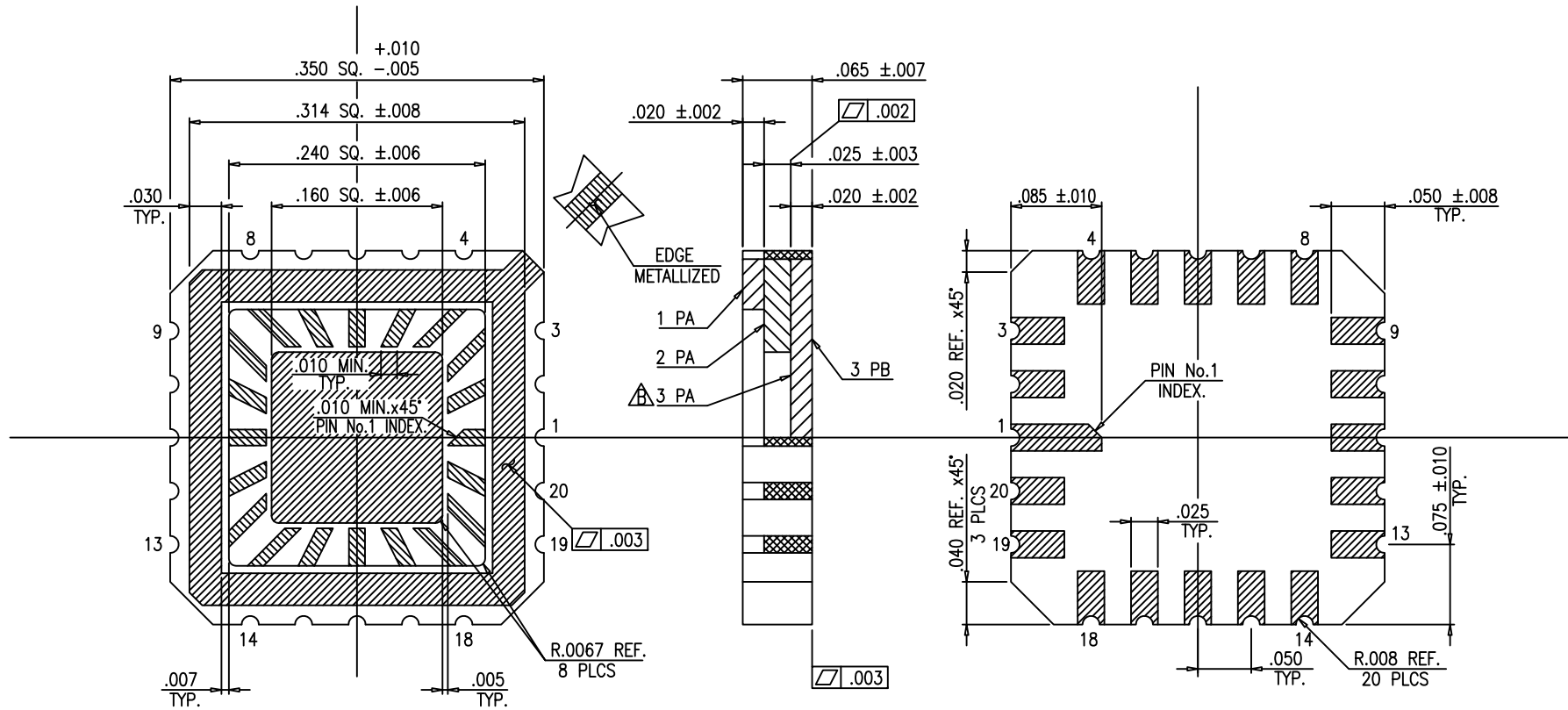


# SSM P/N LCC02046



**NOTES;**

1. ALL EXPOSED METALLIZED AREA SHALL BE GOLD PLATED 20 MICRO INCHES MIN. WITHOUT NICKEL PLATED.
2. SEAL AREA AND DIE ATTACH AREA SHALL BE ISOLATED FROM ALL LEADS. (ZERO GROUND)
3. BAKING TEST CONDITION : 350°C, 60sec, HEATER BLOCK

$\Delta \Delta$  S=0  
D=0

MODIFICATIONS							NAME 20 LCC (.160 SQ. CAV.)	TOLERANCES: UNLESS OTHERWISE SPECIFIED $\pm .005$	DRAWN S.SAWA	CHECKED T.K	APPROVED H.K	DATE APR.16.'08
	$\Delta$	ADDED 3PA PATTERN. CHANGED NOTE;2.	MAY.19.'08	S.SAWA	T.Y	H.K	UE.	MATERIAL KYOCERA A-440				
	$\Delta$	DELETED 3PA PATTERN. CHANGED NOTE;2. AND ADDED NOTE;4.	MAY.16.'08	S.SAWA	T.Y	H.K	UE.	THIRD ANGLE PROJECTION				
		CHANGE	DATE	DRAWN	CHECKED	APPROVED		<b>KYOCERA</b> KYOCERA CORPORATION KYOTO JAPAN	DRAWING NO. PB-CA8272-B	SHEET 1/5		

PB-44808 MOD.



www.spectrum-semi.com Phone: 408.435.5555 Fax: 408.435.8226

