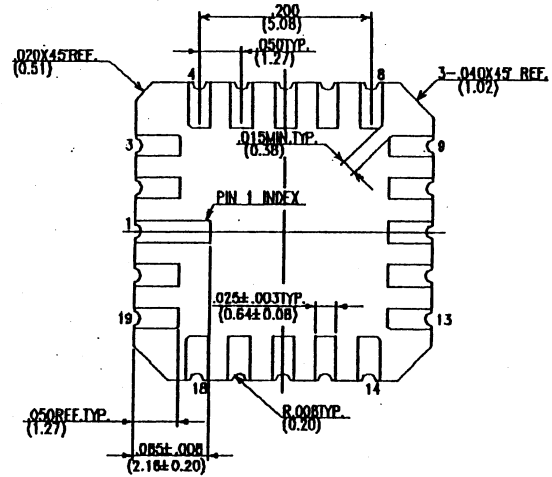
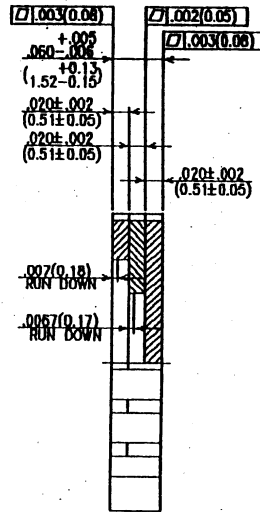
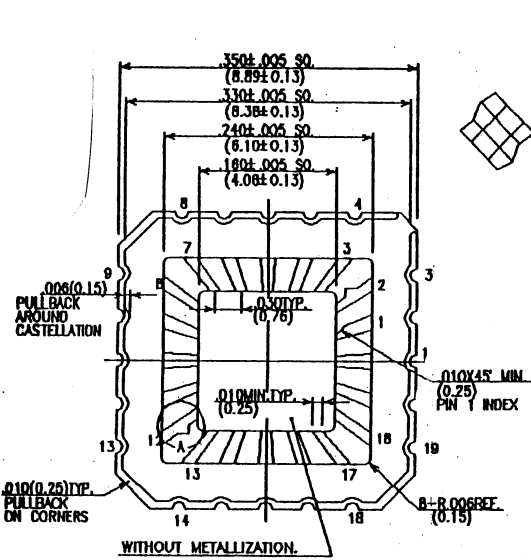
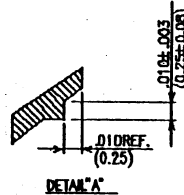


SSM P/N LCC02042



NOTES:

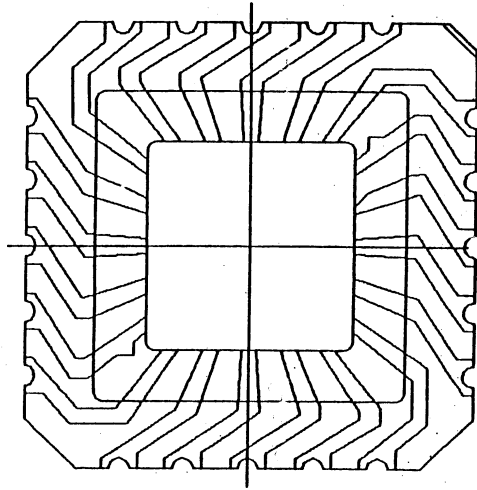
1. ALL EXPOSED METALLIZED AREA SHALL BE GOLD PLATED 80 MICRO INCH MIN. THK. OVER NICKEL PLATED UNLESS OTHERWISE SPECIFIED PURCHASE ORDER.
2. FLATNESS METALLIZED PAD ONLY.
3. SEAL AREA SHALL BE ISOLATED FROM ANY LEADS. (ZERO GROUND)
4. CASTELLATION DEPTH .003 (0.08) TO .015 (0.38). CASTELLATION WIDTH .006 (0.15) TO .022 (0.56).
5. ALL PARTS SHALL CONFORM TO SPEC. #03-00027



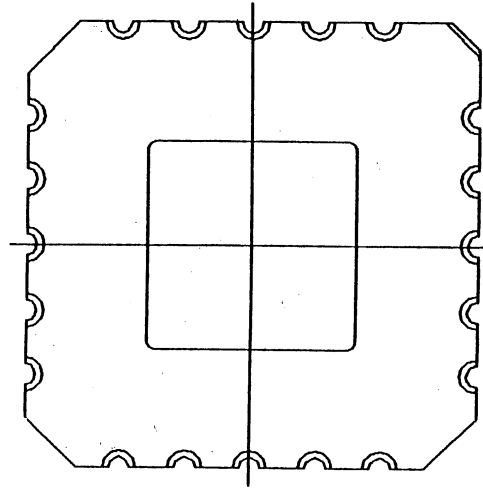
UNLESS OTHERWISE SPECIFIED ALL DIMENSIONS ARE IN INCHES DIMENSIONS IN PARENTHESES ARE MILLIMETERS	DESIGNED BY	DVE	TITLE		
	DATE	HTN	SIZE	HLCC PACKAGE LCC20S3 (160 X 180)	
APPROVED BY	DATE	04/08/84	SCALE	REV	
MATERIAL	APPROVED BY	DATE	A	LCC20S3	51-20252
FINISH	DWG. #:	M3-02339-R01	SCALE	10 : 1	SHEET 1 OF 2



SSM P/N LCC02042



MP-21



MP-11

UNLESS OTHERWISE SPECIFIED		DESIGNED BY	ENC			
ALL DIMENSIONS ARE IN DECIMALS UNLESS OTHERWISE SPECIFIED		DATE	05/09/84			
DECIMALS	ANGLES	HTN		TITLE HLCC PACKAGE LCC20S3 (160 X 160)		
IN	°			SIZE	PART NO.	DWG NO.
1000	0.001			A	LCC20S3	51-20252
MATERIAL		APPROVED BY	ENC	SCALE	15 : 1	SHEET 2 OF 2
FINISH		SUMITOMO DWG. #:	M.S-02330-R02			