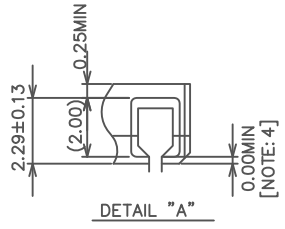
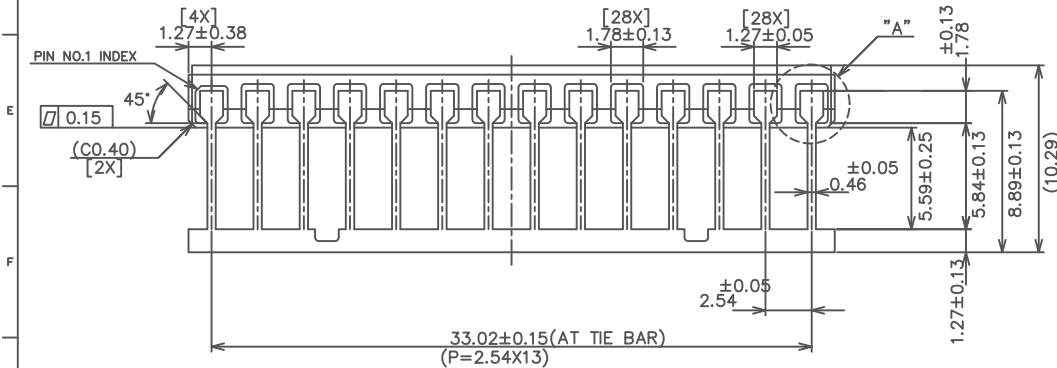
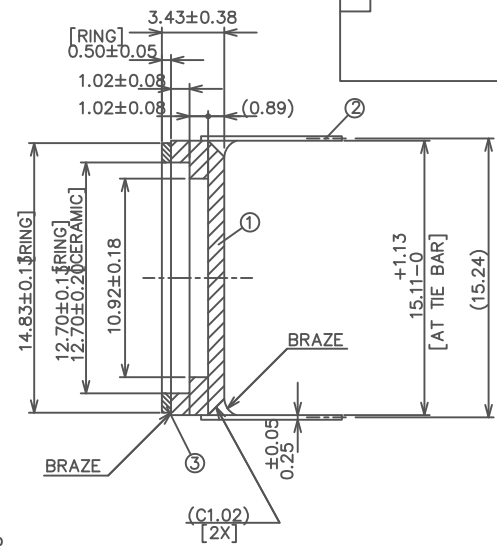
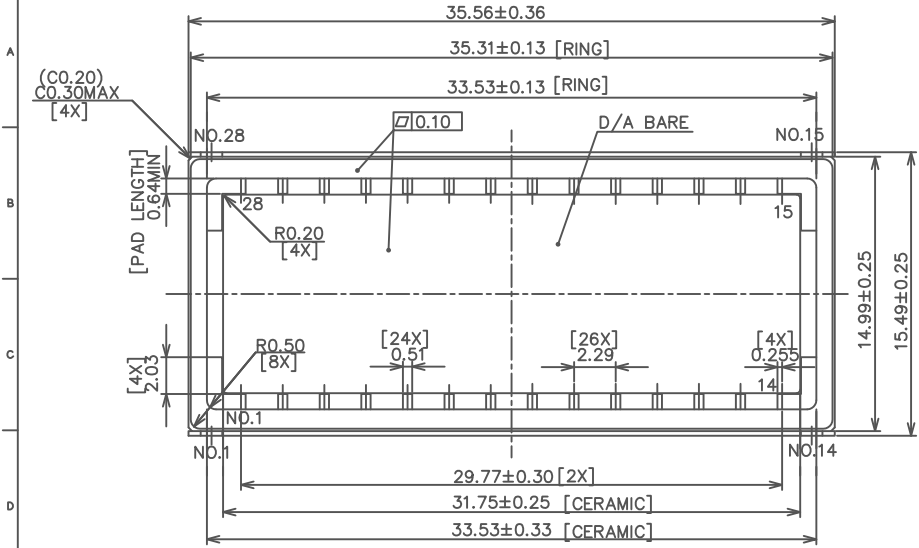




LATEST REVISIONS DESCRIPTION



- NOTES: 1 ALL EXPOSED METALIZATION AND METAL AREAS WITH 2.0µm MIN NICKEL AND THEN WITH 1.5µm MIN GOLD.  
 2. S/R ISOLATED.  
 3. PLATING CONTACT POINT TO BE Ø0.30 MAX ON S/R.  
 4. LEAD STAND OFF PART OF NOT PROTRUDING THAN AT CERAMIC BOTTOM.  
 5. NTK SPEC YS-1002 SHALL APPLY.  
 6. OVER HANG OF RING FROM CERAMIC EDGE & FROM CAVITY EDGE SHALL BE ALLOWED.

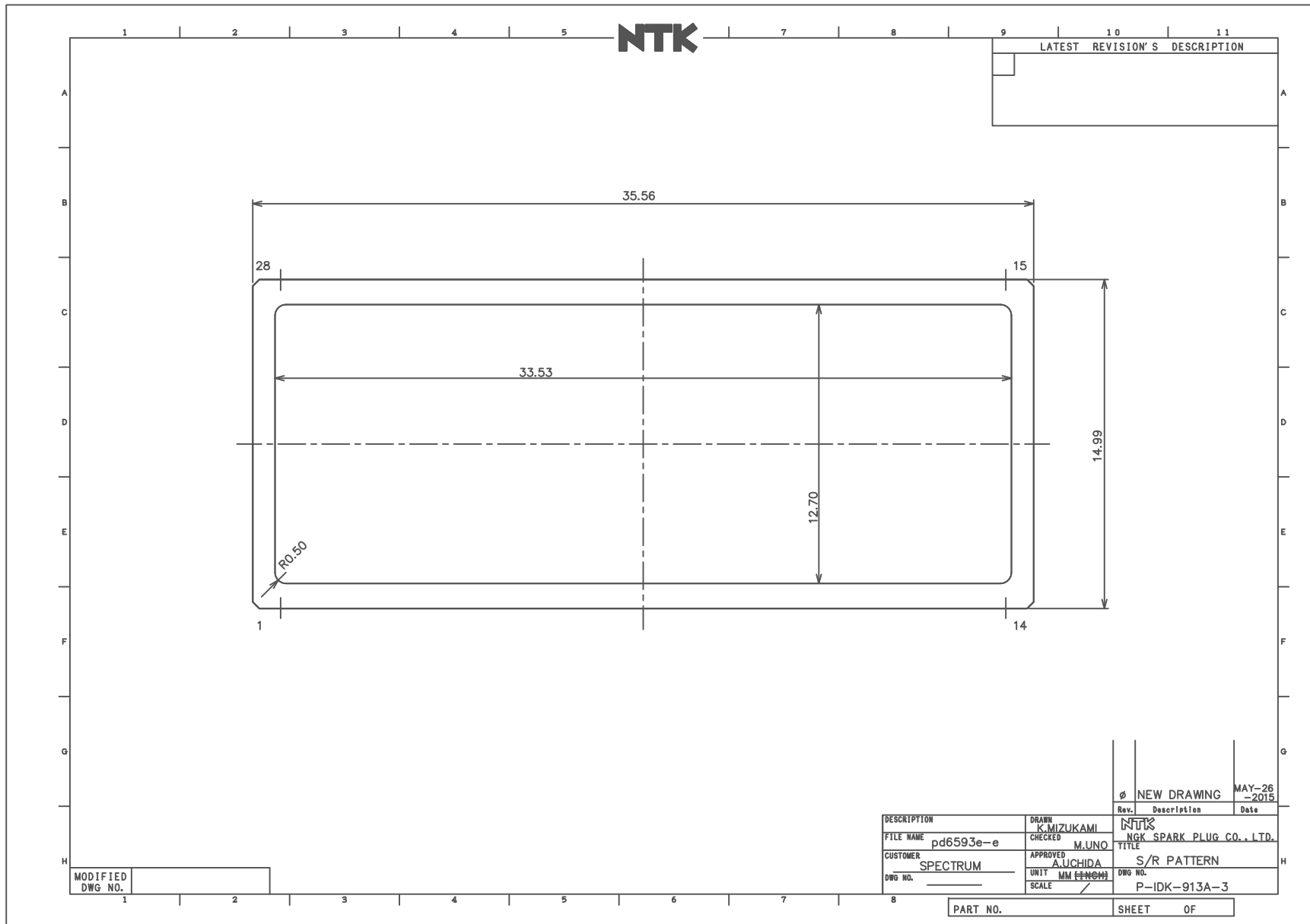
MODIFIED DWG NO. 1

3	RING	KOVAR			
2	LEAD	ALLOY42			
1	CERAMIC	BA-914			
Item Name Material Description			Rev.	Description	Date
UNLESS OTHERWISE SPECIFIED			DRAWN	NTK	
TOLERANCES: ± 1 %			K. MIZUKAMI		
N. L. T. 1 DECIMALS X, Y ±0.25			CHECKED		
2 DECIMALS X, Y ±0.13			M. UNO		
CUSTOMER SPECTRUM			APPROVED		
DWG NO.			A. UCHIDA		
			UNIT	MM	
			SCALE		
			TITLE		28 LEAD SIDE BRAZE HYBRID LARGE CAVITY PKG
			DWG NO.		IDK28F2-6593E

PART NO. SHEET 1 OF 1



# SSM P/N HYB02810



SSM P/N HYB02810

