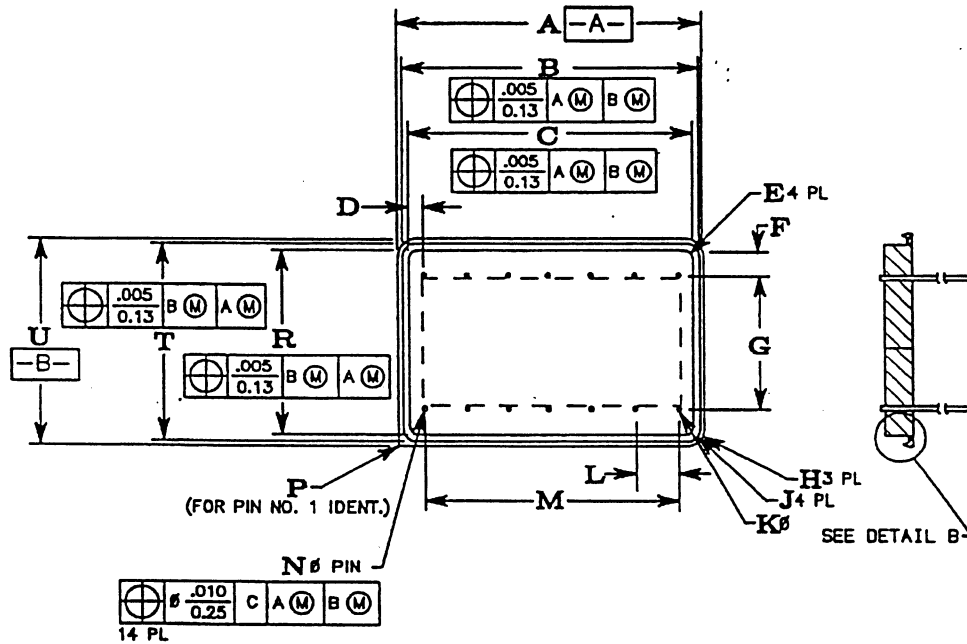


SSM P/N HYB01407



- NOTES:
1. POST TOP FLATNESS MUST MEET THE REQUIREMENTS OF GRS00001.
  2. TRUE POSITION OF .018 $\varnothing$  PIN APPLIES IN AREA SHOWN ONLY.
  3. MAXIMUM GLASS CLIMB SHALL BE .015 INCH (.381 mm).
  4. MAXIMUM FILLET RADIUS .010 UNLESS OTHERWISE SPECIFIED.

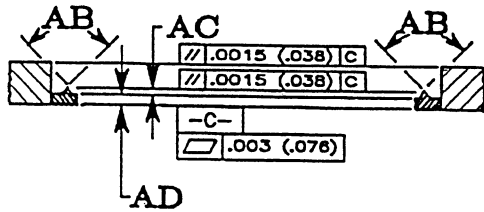
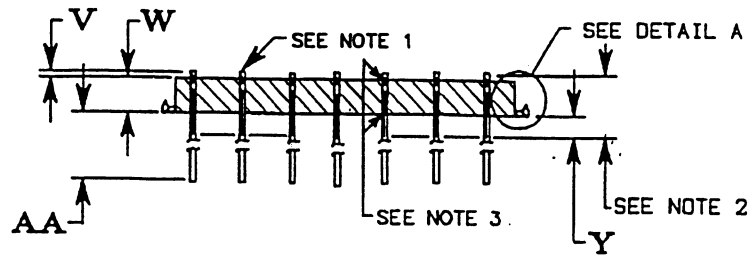
ANY SPECIFICATIONS, DRAWINGS OR REPRINTS, OR DATA FURNISHED TO BIDDER OR SELLER SHALL REMAIN CONFIDENTIAL, SHALL BE USED ONLY FOR THE PURPOSE OF COMPLYING WITH CORPORATION'S REQUESTS FOR QUOTATION OR WITH CORPORATION PURCHASE ORDERS, SHALL NOT BE DISCLOSED TO THIRD PARTIES AND SHALL BE RETURNED AT CORPORATION'S REQUEST. PATENT RIGHTS EMBODIED IN DESIGNS, TOOLS, PATTERNS, DRAWINGS, DEVICES, INFORMATION AND EQUIPMENT SUPPLIED BY CORPORATION PURSUANT TO THIS REQUEST FOR QUOTATION OR PURCHASE ORDER AND EXCLUSIVE RIGHTS FOR THE USE IN REPRODUCTION THEREOF ARE RESERVED BY CORPORATION.

Metal Header, 14 Lead Platform  
Component Specification  
Page 2 of 5

PM03037  
Rev:U  
Release Date:10/31/96



SSM P/N HYB01407



DETAIL A

DETAIL B  
(ROTATED 90° CW)



TYPICAL GROUNDED  
PIN CONFIGURATION.  
SHARP FILLETS.  
SEE TABLE II.

ANY SPECIFICATIONS, DRAWINGS OR REPRINTS, OR DATA FURNISHED TO BIDDER OR SELLER SHALL REMAIN THE PROPERTY OF SPECTRUM SEMICONDUCTOR MATERIALS, INC. CORPORATION'S PROPERTY, SHALL BE KEPT CONFIDENTIAL, SHALL BE USED ONLY FOR THE PURPOSE OF COMPLYING WITH CORPORATION'S REQUESTS FOR QUOTATION OR WITH CORPORATION PURCHASE ORDERS, SHALL NOT BE DISCLOSED TO THIRD PARTIES AND SHALL BE RETURNED AT CORPORATION'S REQUEST. PATENT RIGHTS EMBODIED IN DESIGNS, TOOLS, PATTERNS, DRAWINGS, DEVICES, INFORMATION AND EQUIPMENT SUPPLIED BY CORPORATION PURSUANT TO THIS REQUEST FOR QUOTATION OR PURCHASE ORDER AND EXCLUSIVE RIGHTS FOR THE USE IN REPRODUCTION THEREOF ARE RESERVED BY CORPORATION.

Metal Header, 14 Lead Platform  
Component Specification  
Page 3 of 5

PM03037  
Rev:U  
Release Date:10/31/96



# SSM P/N HYB01407

Table 2 DIMENSION TABLE

	INCHES		MILLIMETERS	
	Min.	Max.	Min.	Max.
A	.0865	.872	21.97	22.15
B	.825	.835	20.96	21.21
C	.765	.772	19.43	19.61
D	.085 Ref.		2.16 Ref.	
E	-----	.035 R	-----	0.89 R
F	.049 Ref.		1.24 Ref.	
G	.300 Ref.		7.62 Ref.	
H	.080 Ref.		2.03 Ref.	
J	.060 Ref.		1.52 Ref.	
K	.056 Ref.		1.42 Ref.	
L	.100 Ref.		2.54 Ref.	
M	.600 Ref.		15.24 Ref.	
N	.016	.020	0.41	0.51
P	-----	.010 R	-----	0.25 R
R	.393	.400	9.98	10.16
T	.453	.463	11.51	11.76
U	.493	.500	12.52	12.70
V	.025	.035	0.64	0.89
W	.060		1.52	
Y	.050		1.27	
AA	.240	.260	6.10	6.60
AB	87°	93°	87°	93°
AC	.004	.008	0.10	0.20
AD	.013	.017	0.33	0.43

Table 3 PART NUMBER TABLE

	DESCRIPTION
PM03037-015	Header - All Through Pins

ANY SPECIFICATIONS, DRAWINGS OR REPRINTS, OR DATA FURNISHED TO BIDDER OR SELLER SHALL REMAIN CONFIDENTIAL, SHALL BE USED ONLY FOR THE PURPOSE OF COMPLYING WITH CORPORATION'S REQUESTS FOR QUOTATION OR WITH CORPORATION PURCHASE ORDERS, SHALL NOT BE DISCLOSED TO THIRD PARTIES AND SHALL BE RETURNED AT EMBODIED IN DESIGNS, TOOLS, PATTERNS, DRAWINGS, DEVICES, INFORMATION AND EQUIPMENT SUPPLIED BY CORPORATION PURSUANT TO THIS REQUEST FOR QUOTATION OR PURCHASE ORDER AND EXCLUSIVE RIGHTS FOR THE USE IN REPRODUCTION THEREOF ARE RESERVED BY CORPORATION.

Metal Header, 14 Lead Platform  
Component Specification  
Page 4 of 5

PM03037  
Rev J  
Release Date: 10/31/03

