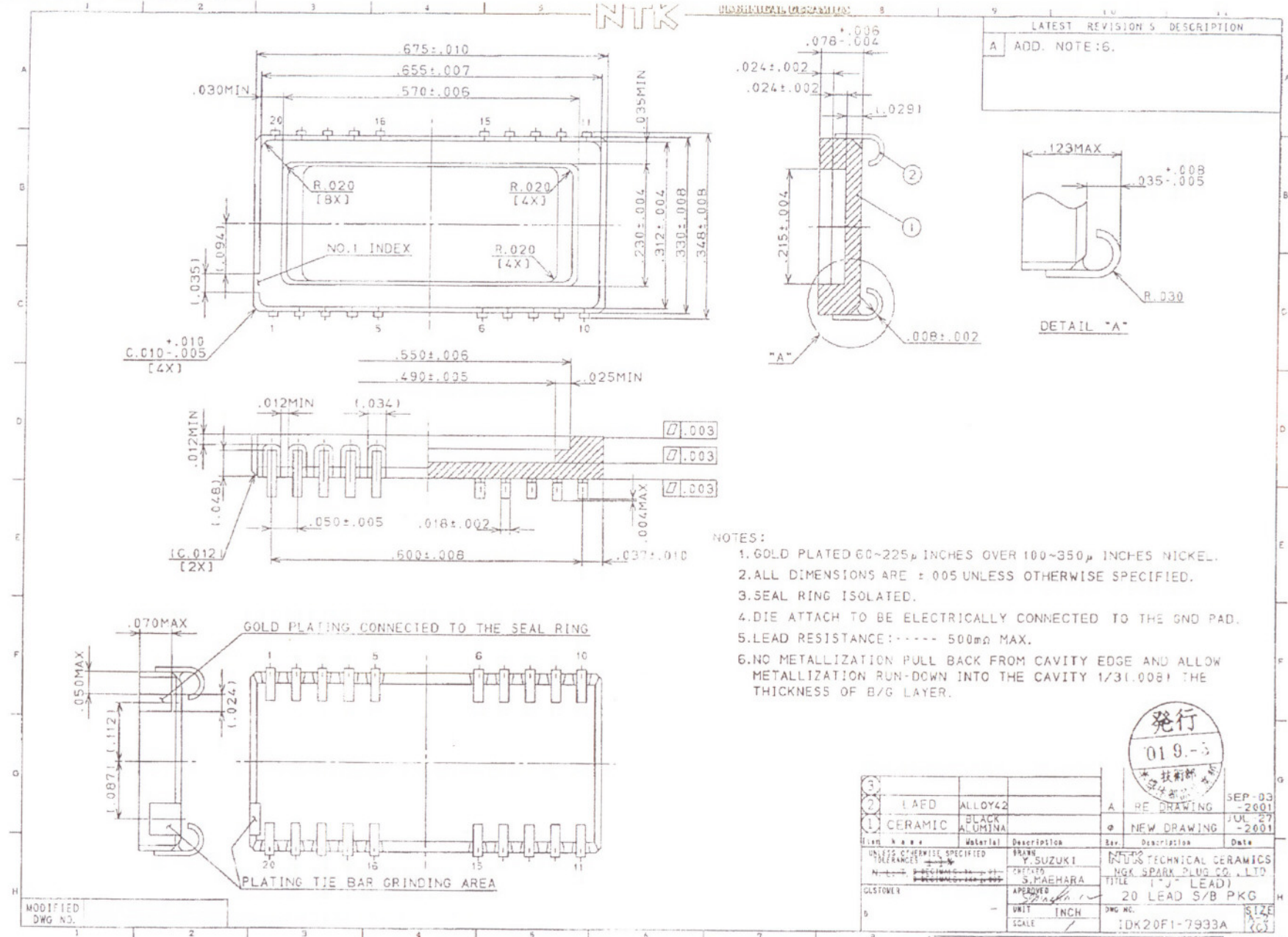


# SSM P/N CSO02006

NTK



LATEST REVISION & DESCRIPTION	
A	ADD. NOTE :6.

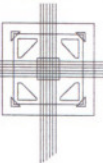
**NOTES:**

1. GOLD PLATED 60~225μ INCHES OVER 100~350μ INCHES NICKEL.
2. ALL DIMENSIONS ARE ± .005 UNLESS OTHERWISE SPECIFIED.
3. SEAL RING ISOLATED.
4. DIE ATTACH TO BE ELECTRICALLY CONNECTED TO THE GND PAD.
5. LEAD RESISTANCE:----- 500mΩ MAX.
6. NO METALLIZATION PULL BACK FROM CAVITY EDGE AND ALLOW METALLIZATION RUN-DOWN INTO THE CAVITY 1/3(.008) THE THICKNESS OF B/G LAYER.

発行  
019-3  
技術部  
発行部

3	LEAD	ALLOY42		A	RE DRAWING	SEP-03 -2001
2	CERAMIC	BLACK ALUMINA		e	NEW DRAWING	JUL-27 -2001
Rev.	Material	Description	Rev.	Description	Date	
UNLESS OTHERWISE SPECIFIED	FRONT	Y. SUZUKI	REVISED	INJUS TECHNICAL CERAMICS		
		S. MAEHARA		NGK SPARK PLUG CO., LTD.		
CUSTOMER	APPROVED	Sparks		TITLE		
				20 LEAD S/B PKG		
	UNIT	INCH	DWG NO.			SIZE
	SCALE		IDK20F1-7933A			A3

PART NO. SHEET 1 OF 2 M·H



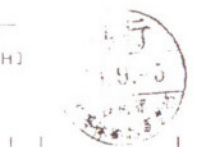
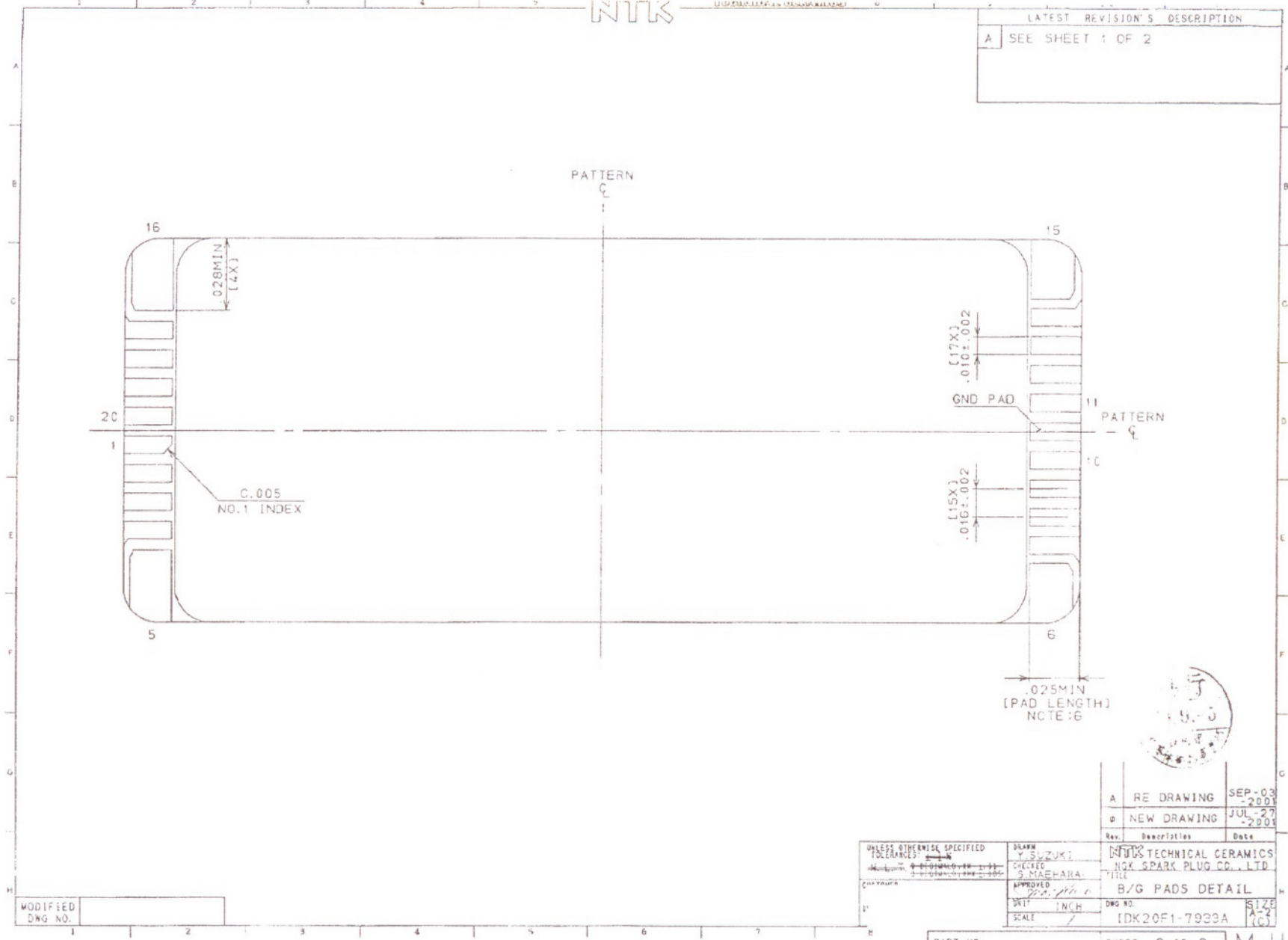
**SPECTRUM**  
SEMICONDUCTOR MATERIALS, INC.

www.spectrum-semi.com Phone: 408-435-5555 Fax: 408-435-8226

# SSM P/N CSO02006

NTK

LATEST REVISION'S DESCRIPTION	
A	SEE SHEET 1 OF 2

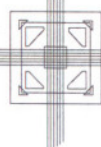


Rev.	Description	Date
A	RE DRAWING	SEP-03-2001
a	NEW DRAWING	JUL-27-2001

UNLESS OTHERWISE SPECIFIED TOLERANCES: $\pm .005$	DRAWN BY: SUZUKI	DATE: 7/27/01
APPROVED BY: MAEHARA	CHECKED BY: MAEHARA	DATE: 7/27/01
SCALE: 1" = 1"	DWG NO.:	SIZE: A-2
	IDK20F1-7929A	(C)

MODIFIED	
DWG NO.	

PART NO. SHEET 2 OF 2 M·H



**SPECTRUM**  
SEMICONDUCTOR MATERIALS, INC.

www.spectrum-semi.com Phone: 408-435-5555 Fax: 408-435-8226