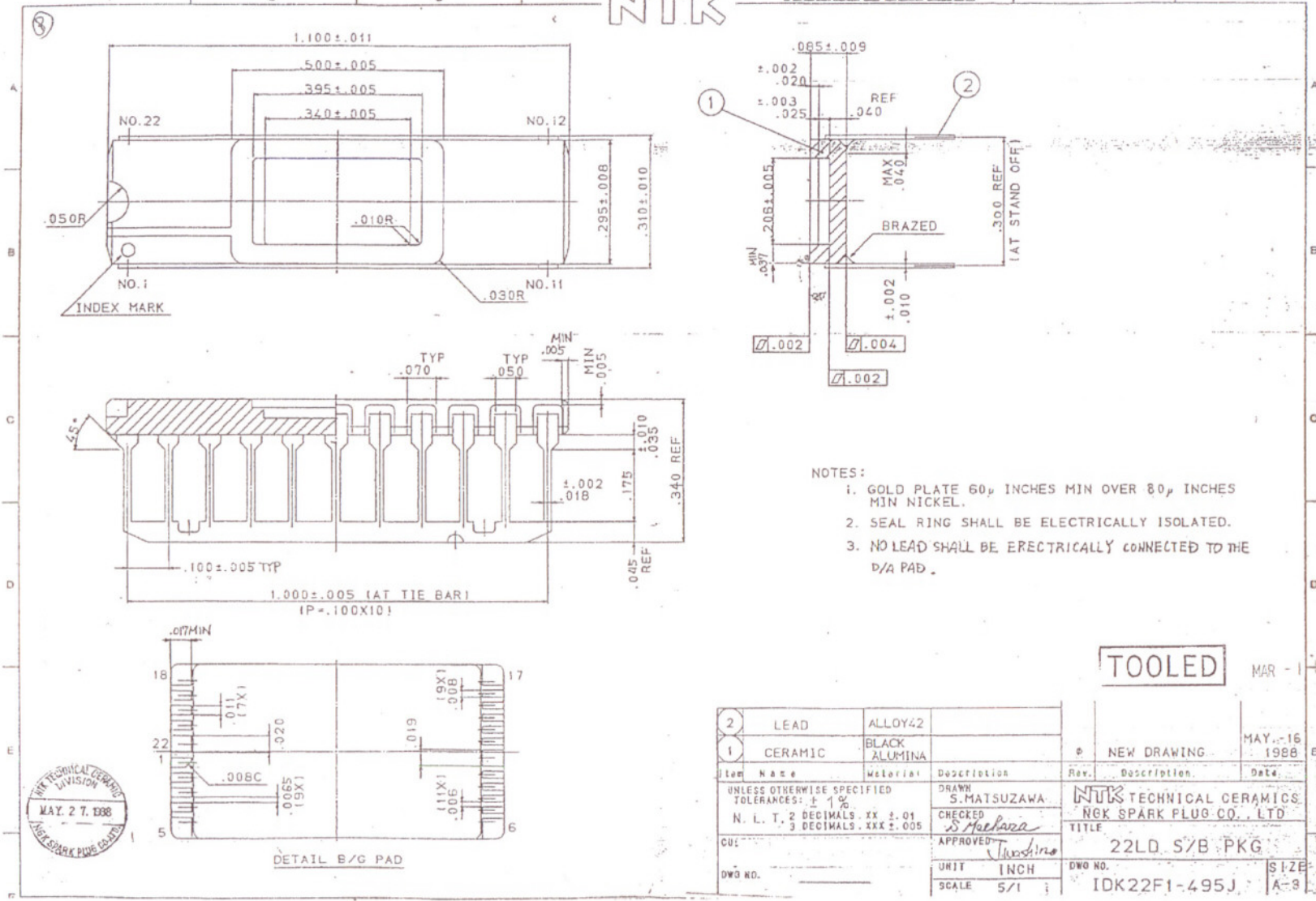


NTK

TECHNICAL CERAMICS



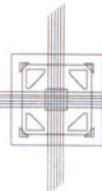
- NOTES:
1. GOLD PLATE 60μ INCHES MIN OVER 80μ INCHES MIN NICKEL.
  2. SEAL RING SHALL BE ELECTRICALLY ISOLATED.
  3. NO LEAD SHALL BE ELECTRICALLY CONNECTED TO THE D/A PAD.

TOOLED

MAR - 1988

NTK TECHNICAL CERAMICS DIVISION  
MAY 27 1988  
NGK SPARK PLUG CO. LTD.

2	LEAD	ALLOY 42			
1	CERAMIC	BLACK ALUMINA			
Item Name	Material	Description	Rev.	Description	Date
UNLESS OTHERWISE SPECIFIED TOLERANCES: ± .1%					
N. L. T. 2 DECIMALS .XX ± .01					
3 DECIMALS .XXX ± .005					
CUT		APPROVED			
DWG NO.		UNIT	INCH	DWG NO.	
		SCALE	5/1		
				TITLE	22LD S/B PKG
					IDK22F1-495J
					SIZE A-3



**SPECTRUM**  
SEMICONDUCTOR MATERIALS, INC.