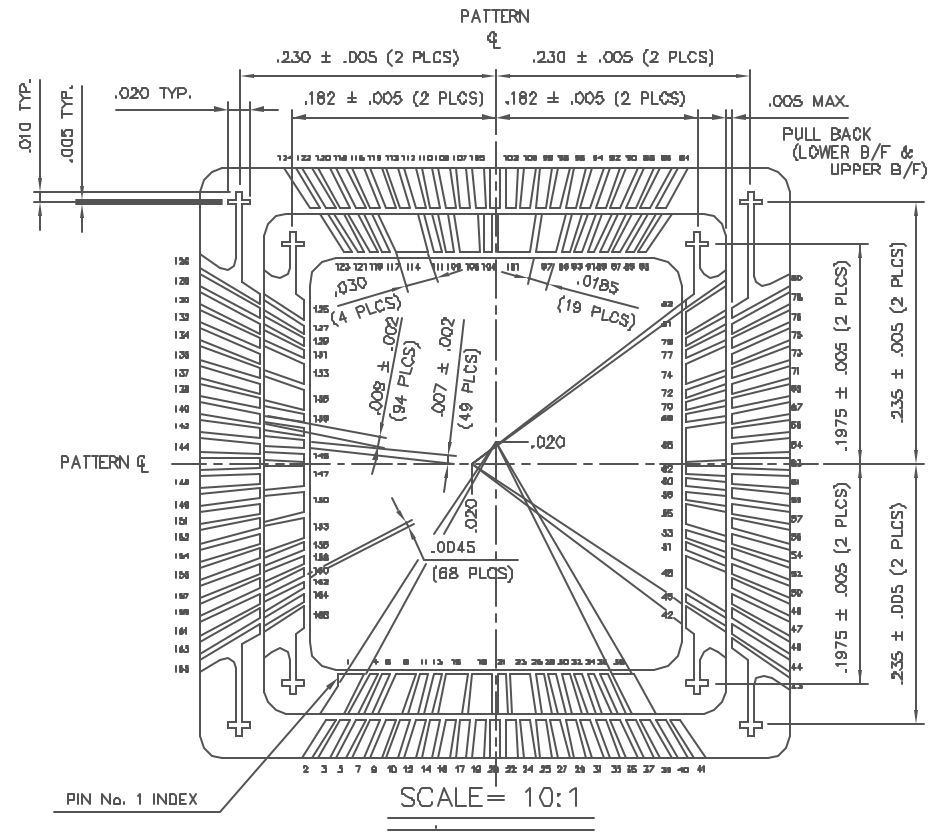


SSM P/N CPG17501

REVISED		DATE	BY



VSS	C6,D6,D8,D10,F4,F12,F13, H4,H12, K3,K4,K12,K13 M6,M8,M10,N10, S/R,D/A
VCC	C8,D5,D7,D9,D11,E4,E12, G4,G12,J4,J12,L4,L12,M5, M7,M9,M11,NB,H13

- NOTES**
- ALL EXPOSED METALLIZATION SHALL BE GOLD PLATED 40μ INCHES MIN. OVER 100μ INCHES MIN. NICKEL.
 - BEAL AREA TO BE METALLIZED.
 - DIE ATTACH AREA TO BE METALLIZED.
 - BEAL RING AREA AND DIE ATTACH AREA TO BE ELECTRICALLY CONNECTED TO V88.
 - LEAD RESISTANCE:
POWER(V88,VCC) ----- mΩ MAX. (CLOSEST PIN)
THE OTHERS ----- 140mΩ MAX.
 - EQUIVALENT TO KYOCERA DWG. # KD-P44918
 - REF. 6300051

REVIEW CLASS
3

PU		1-18-88		FOURDASH	
Drawn		Beta			
Check		Beta			
Qty		Beta			
Next Assy		Beta			
Approved		Beta			
Approved		Beta			
Approved		Beta			
Approved		Beta			
Code	Material	Item	Drawn By	Drawn No.	Rev.
AZ	D	D		6300583	N/C
Scale	Sheet				



www.spectrum-semi.com Phone: 408.435.5555 Fax: 408.435.8226

