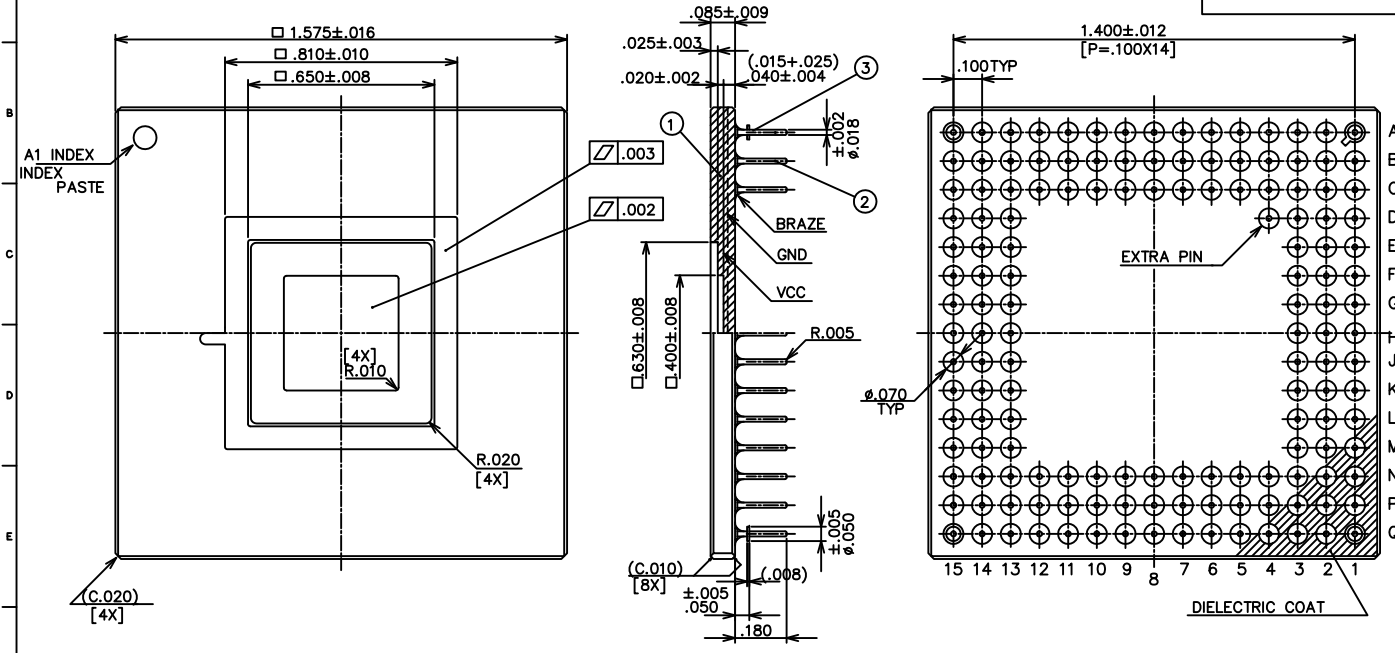


# SSM P/N CPG14445

**NTK**

REFERENCE DRAWING

LATEST REVISION'S DESCRIPTION



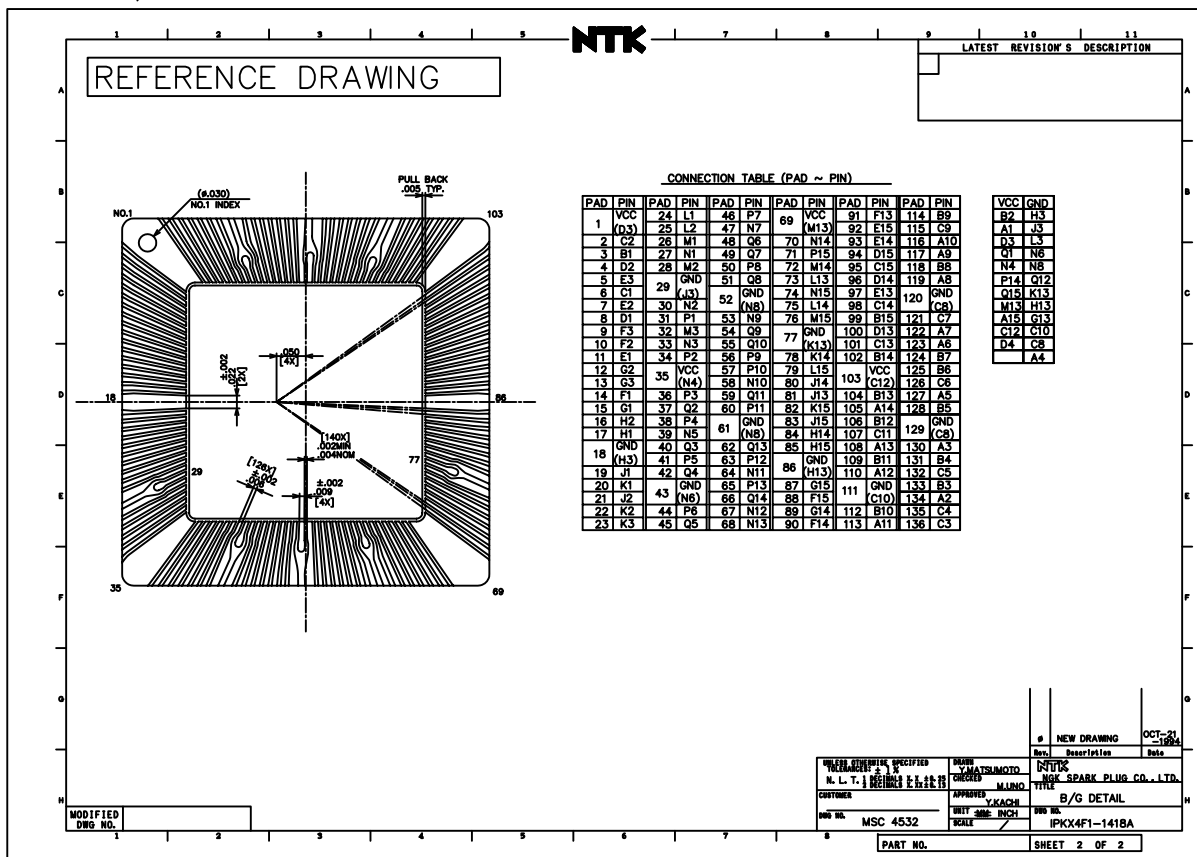
- NOTES:
1. GOLD PLATE 60? INCHES MIN OVER  
80? INCHES MIN NICKEL.
  2. LEAD RESISTANCE: (NEAREST PIN TO PAD)  
NO. 1,35,69,103 (VCC) ---100m? MAX.  
NO. 18,86 (GND) ---100m? MAX.  
NO. 29,43,52,61,77,111,120,129 (GND) ---150m? MAX.  
OTHERS ---900m? MAX.
  3. D4 PIN(EXTRA PIN) TO BE ELECTRICALLY  
CONNECTED TO D3 PIN.
  4. SEAL RING AND DIE ATTACH PAD TO BE  
FLOATING FROM ANY PINS.
  5. THE VCC TO BE ON SAME LEVEL AS DIE ATTACH,  
BUT ISOLATED.

3	STOPPER PIN	KOVAR			
2	PIN	KOVAR			
1	CERAMIC	BLACK ALUMINA			
Item Name Material Description			Rev.	Description	Date
UNLESS OTHERWISE SPECIFIED					
TOLERANCES: ± 1%					
N. L. T. : DECIMALS X X ± 0.25					
CUSTOMER			APPROVED	TITLE	
MUNO			YKACHI	144 PIN GRID ARRAY	
UNIT: INCH			SCALE: 1:1	DWG NO. IPKX4F1-1418A	
DWG NO. MSC 4532			PART NO. SHEET 1 OF 2		

MODIFIED DWG NO.



# SSM P/N CPG14445



www.spectrum-semi.com Ph: 408.435.5555 Email: ssm\_sales@spectrum-semi.com