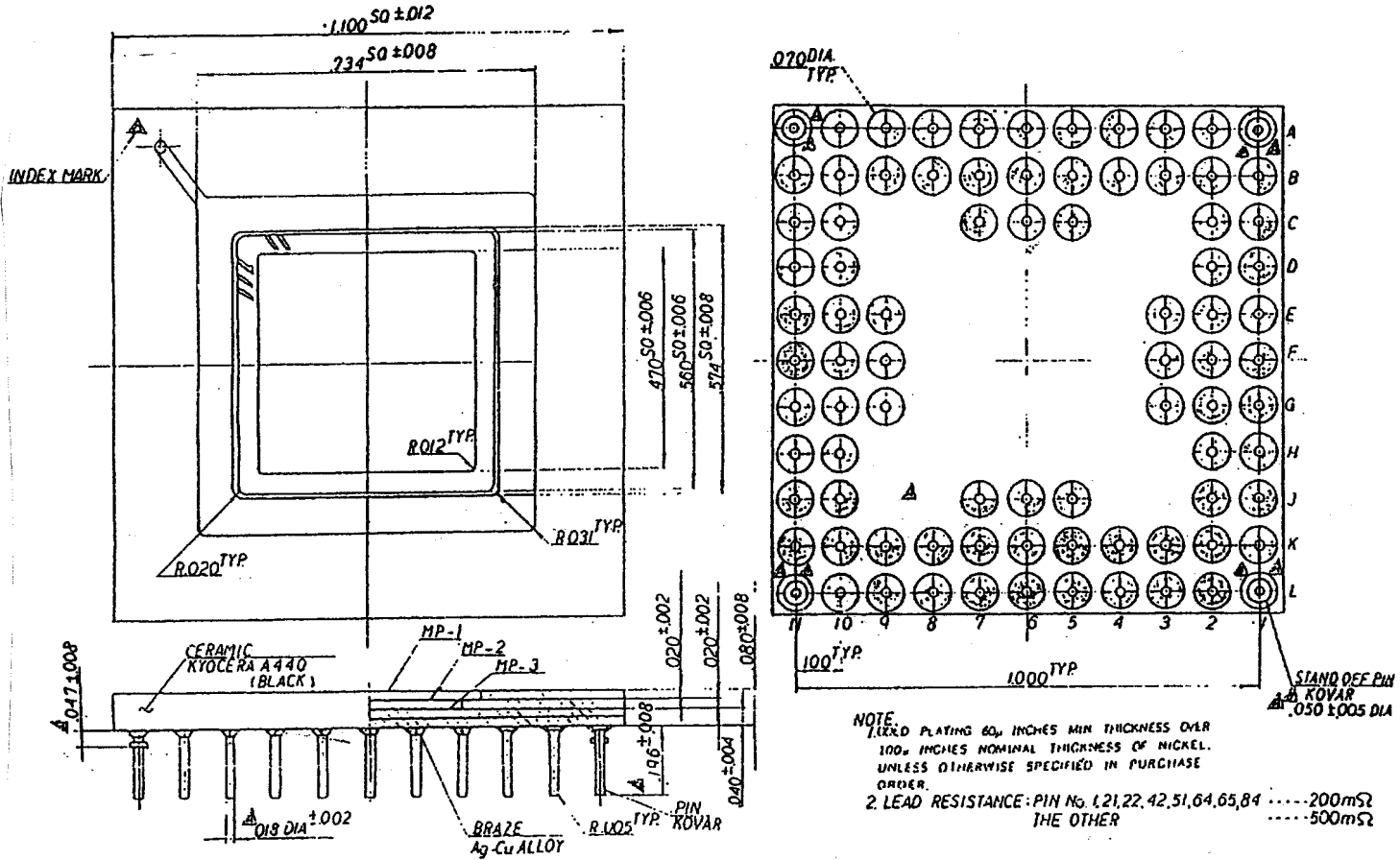


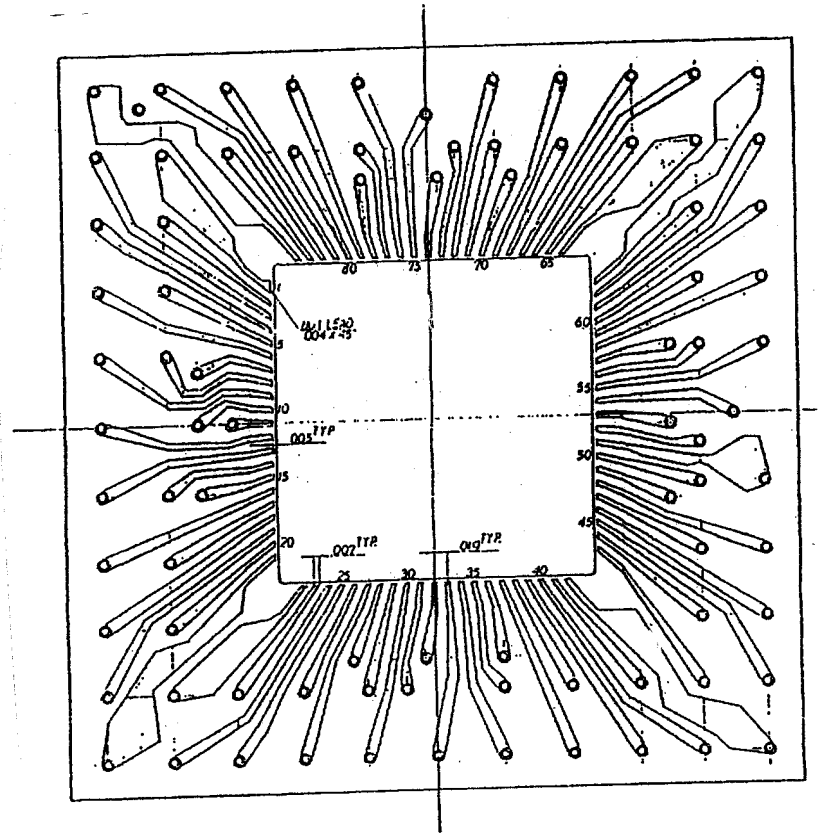
SSM P/N CPG08432



NAME 84 PIN PLUG-IN PACKAGE		TOLERANCES UNLESS OTHERWISE SPECIFIED	DRAWN M. J. ...	CHECKED ...
SCALE 5 : 1	MATERIAL AS INDICATED	±1.0% NLT. ±0.05	APPROVED ...	DATE JUL 21, '82
KYOTO CERAMIC, CO., LTD.		KYOTO JAPAN	BWC MD KD-82494-B 1/4	



SSM P/N CPG08432



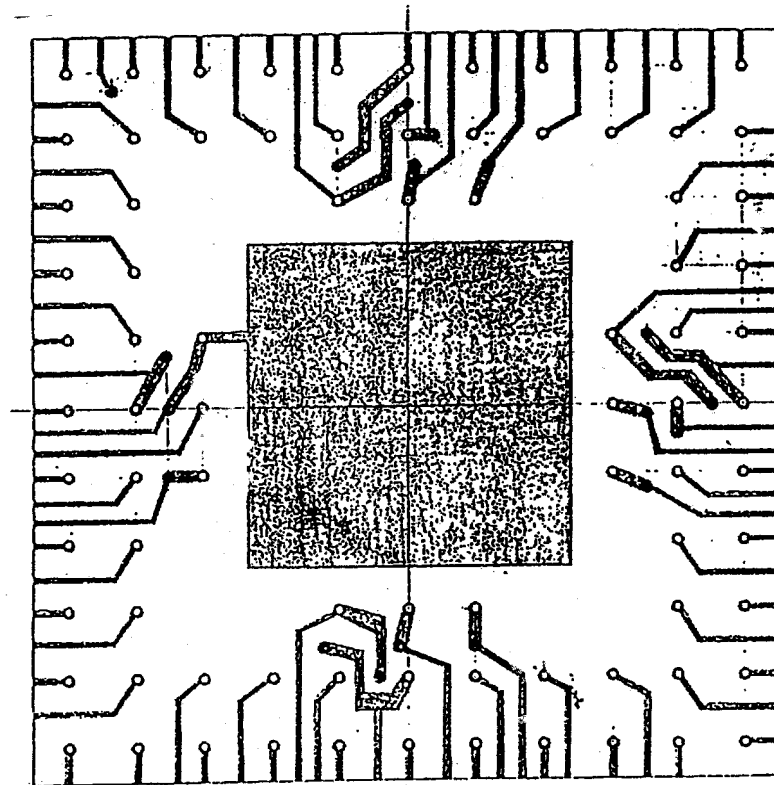
MP-2

64 PIN PLUG-IN PACKAGE		DATE	REVISED
15111	YATAYAMA	1/11/82	1/11/82
10 : 1		1/11/82	1/11/82
KYOTO CERAMIC CO., LTD.		KYOTO JAPAN	KD-3244-B74



www.spectrum-semi.com Phone: 408-435-5555 Fax: 408-435-8226

SSM P/N CPG08432



MP-3

NAME	64 PIN PLUG-IN PACKAGE	DESIGNER	DATE	CHECKED
SCALE	AS SHOWN	DATE	JUN 21 '66	JUN 21 '66
NO. 1				
KYOTO CERAMIC CO., LTD.		KYOTO JAPAN	TEL NO.	40-52494-8



www.spectrum-semi.com Phone: 408-435-5555 Fax: 408-435-8226

SSM P/N CPG08432

WIRE BOND PAD/CONNECTOR PIN INTERCONNECTION PLAN

BONDING PAD	PIN No.
1	B 2
2	C 2
3	B 1
4	C 1
5	D 2
6	D 1
7	F 2
8	E 2
9	E 1
10	E 3
11	F 3
12	F 1
13	G 1
14	G 2
15	G 3
16	H 1
17	H 2
18	J 1
19	K 1
20	J 2
21	L 1

BONDING PAD	PIN No.
22	K 2
23	K 3
24	L 2
25	L 3
26	K 4
27	L 4
28	K 6
29	K 5
30	L 5
31	J 5
32	J 6
33	L 6
34	L 7
35	K 7
36	J 7
37	L 8
38	K 8
39	L 9
40	L 10
41	K 9
42	L 11

BONDING PAD	PIN No.
43	K 10
44	J 10
45	K 11
46	J 11
47	H 10
48	H 11
49	G 9
50	G 10
51	G 11
52	F 10
53	F 9
54	E 9
55	E 11
56	E 10
57	F 11
58	D 11
59	D 10
60	C 11
61	B 11
62	C 10
63	A 11

BONDING PAD	PIN No.
64	B 10
65	B 9
66	A 10
67	A 9
68	B 8
69	A 8
70	C 7
71	B 7
72	A 7
73	B 6
74	C 6
75	C 5
76	A 5
77	B 5
78	A 6
79	A 4
80	B 4
81	A 3
82	A 2
83	B 3
84	A 1

NAME 84 PIN PLUG-IN PACKAGE		TOLERANCES UNLESS OTHERWISE SPECIFIED	DRAWN Y. Yoshida	CHECKED M. Shimizu
SCALE	MATERIAL		APPROVED	DATE JUL 21, 82
KYOTO CERAMIC CO., LTD.		KYOTO JAPAN	DWG. NO. KD-82494-B/4	

