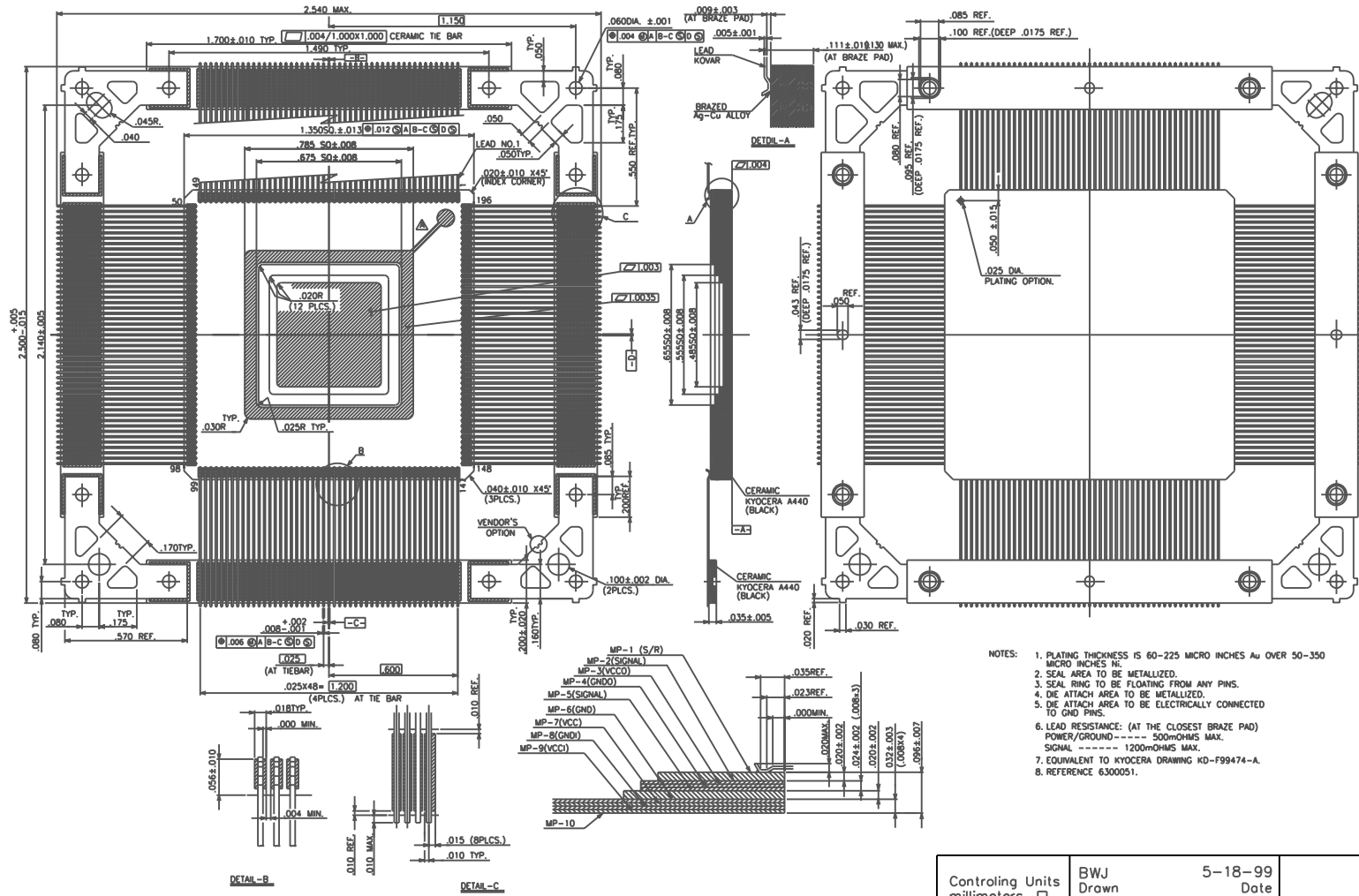


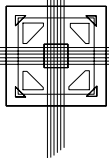
# SSM P/N CCF19610

REVISIONS			
LTR.	DESCRIPTION	DATE	APPROVAL



- NOTES:
1. PLATING THICKNESS IS 60-225 MICRO INCHES Au OVER 50-350 MICRO INCHES Ni.
  2. SEAL AREA TO BE METALLIZED.
  3. SEAL RING TO BE FLOATING FROM ANY PINS.
  4. DIE ATTACH AREA TO BE METALLIZED.
  5. DIE ATTACH AREA TO BE ELECTRICALLY CONNECTED TO GND PINS.
  6. LEAD RESISTANCE: (AT THE CLOSEST BRAZE PAD) POWER/GROUND ----- 500mOHMS MAX. SIGNAL ----- 1200mOHMS MAX.
  7. EQUIVALENT TO KYOCERA DRAWING KD-F99474-A.
  8. REFERENCE 6300051.

Controlling Units millimeters <input type="checkbox"/> inches <input checked="" type="checkbox"/>	BWJ	5-18-99		
	Drawn	Date		
.X = ±.1 .XX = ±.02 .XXX = ±.005 .XXXX = ±.0002 Angles = ±2°	Check	Date	196 CQFP .485" CAVITY	
	Approved	Date	Code Ident 3M	Size B
F010029.B	Approved	Date	Scale 2:1	Drawing No. 6300635 Rev A
			CAD File No. 0635PK0	Sheet 1 of 2



**SPECTRUM**  
SEMICONDUCTOR MATERIALS, INC.

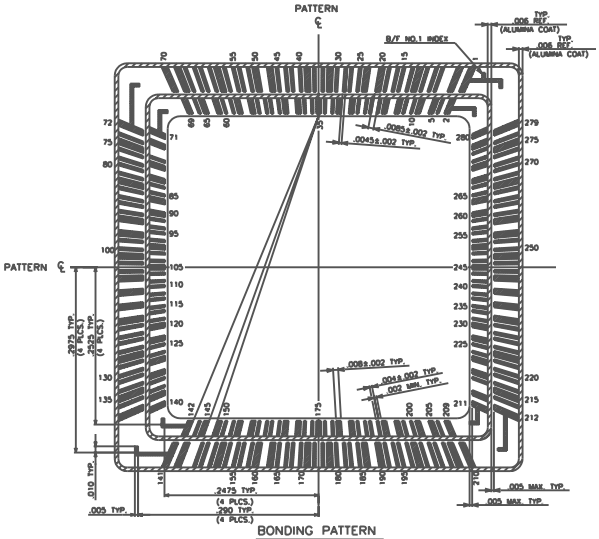
www.spectrum-semi.com Phone: 408.435.5555 Fax: 408.435.8226

REVISIONS			
LTR.	DESCRIPTION	DATE	APPROVAL

WIRE BOND PAD / CONNECTOR PIN INTERCONNECTION PLAN

W/B NO.	PIN NO.	W/B NO.	PIN NO.	W/B NO.	PIN NO.	W/B NO.	PIN NO.	W/B NO.	PIN NO.	W/B NO.	PIN NO.	W/B NO.	PIN NO.	W/B NO.	PIN NO.	W/B NO.	PIN NO.	W/B NO.	PIN NO.
1	VCC0	31	21	61	45	91	62	121	86	151	VCC	181	GND0	211	GND0	241	168	271	192
2	GND	32	VCC	62	GND0	92	63	122	87	152	104	182	128	212	VCC0	242	VCC1	272	GND0
3	VCC	33	22	63	46	93	VCC1	123	GND1	153	105	183	129	213	GND	243	169	273	193
4	1	34	24	64	47	94	64	124	88	154	GND1	184	GND	214	148	244	171	274	194
5	GND	35	GND	65	GND	95	65	125	90	155	106	185	130	215	VCC	245	GND	275	VCC
6	2	36	25	66	48	96	VCC	126	VCC0	156	107	186	132	216	149	246	172	276	195
7	3	37	26	67	49	97	67	127	91	157	GND1	187	VCC1	217	150	247	173	277	196
8	GND0	38	VCC0	68	VCC	98	68	128	92	158	109	188	133	218	GND0	248	VCC0	278	GND
9	4	39	28	69	GND	99	GND0	129	GND1	159	110	189	134	219	151	249	175	279	VCC0
10	5	40	29	70	VCC0	100	69	130	93	160	VCC	190	VCC	220	152	250	176	280	GND0
11	VCC	41	GND0	71	GND0	101	70	131	94	161	111	191	135	221	GND1	251	GND0		
12	6	42	30	72	VCC0	102	VCC0	132	GND0	162	112	192	136	222	153	252	177		
13	7	43	31	73	GND	103	71	133	95	163	VCC1	193	GND1	223	154	253	178		
14	GND1	44	GND	74	50	104	73	134	96	164	113	194	137	224	VCC0	254	VCC		
15	8	45	32	75	VCC	105	GND	135	VCC	165	114	195	139	225	155	255	179		
16	9	46	34	76	51	106	74	136	97	166	GND1	196	GND1	226	156	256	181		
17	GND1	47	VCC1	77	52	107	75	137	98	167	116	197	140	227	GND1	257	VCC1		
18	11	48	35	78	GND0	108	VCC1	138	GND	168	117	198	141	228	158	258	182		
19	12	49	36	79	53	109	77	139	VCC0	169	GND0	199	VCC	229	159	259	183		
20	VCC	50	VCC	80	54	110	78	140	GND0	170	118	200	142	230	GND	260	GND		
21	13	51	37	81	GND1	111	VCC0	141	VCC0	171	119	201	143	231	160	261	184		
22	14	52	38	82	55	112	79	142	GND	172	VCC0	202	GND0	232	161	262	185		
23	VCC1	53	GND1	83	56	113	80	143	VCC	173	120	203	144	233	VCC1	263	GND1		
24	15	54	39	84	VCC0	114	VCC	144	99	174	122	204	145	234	162	264	186		
25	16	55	41	85	57	115	81	145	GND	175	GND	205	GND	235	163	265	188		
26	GND	56	GND1	86	58	116	83	146	100	176	123	206	146	236	VCC	266	VCC0		
27	18	57	42	87	GND1	117	VCC1	147	101	177	124	207	147	237	165	267	189		
28	19	58	43	88	60	118	84	148	GND0	178	VCC	208	VCC	238	166	268	190		
29	GND0	59	VCC	89	61	119	85	149	102	179	126	209	GND	239	VCC0	269	GND1		
30	20	60	44	90	GND	120	GND	150	103	180	127	210	VCC0	240	167	270	191		

S/R	NC
D/A	GND



EXTERNAL GND/VCC LEADS:  
 VCC: 33,131  
 VCC0:17,66,115,164  
 VCC1: 82,180  
 GND:23,121,170  
 GND0: 10,27,40,59,76,89,108,138,157,187  
 GND1: 72,125,174  
 GND TO BE ELECTRICALLY CONNECTED TO GND0

Controlling Units millimeters <input type="checkbox"/> inches <input checked="" type="checkbox"/> .X = ±.1 .XX = ±.02 .XXX = ±.005 .XXXX = ±.0002 Angles = ±2° F010029.B	BWJ Drawn	5-18-99 Date	196 CQFP .485" CAVITY			
	Check	Date				
	Approved	Date	Code Ident 3M	Size B	Drawing No. 6300635	Rev A
	Approved	Date	Scale N/A	CAD File No.	0635PK0	Sheet 2 of 2

