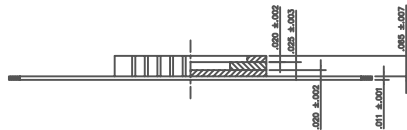
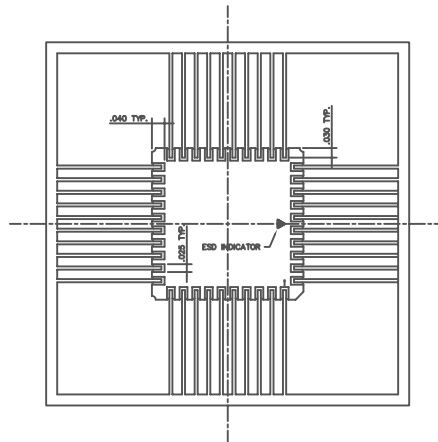
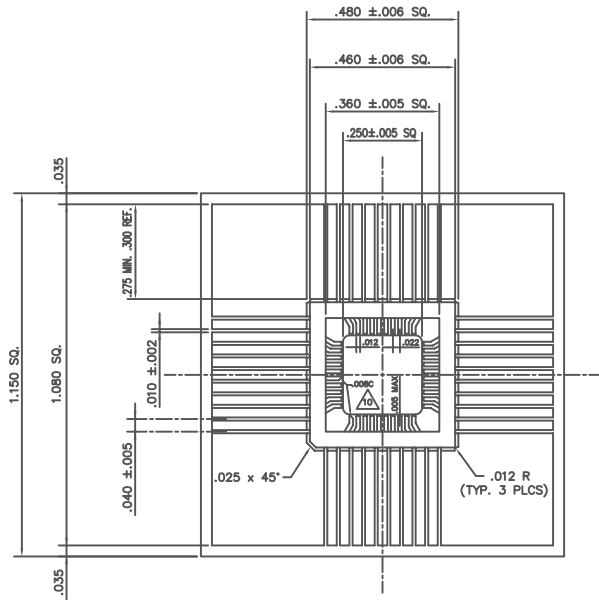


SSM P/N CCF04007

| REVISIONS | | | |
|-----------|-------------|------|----------|
| REV. | DESCRIPTION | DATE | APPROVAL |
| | | | |

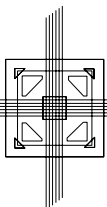


NOTES:

- ALL EXPOSED METALLIZED AREA ON CERAMIC SHALL BE GOLD PLATED, 50 MICRO INCHES MIN. OVER 100 MICRO INCHES NICKEL MIN.
- SEAL RING AND DIE ATTACH PAD ARE NOT GROUNDED TO A LEAD.
- MATERIAL:
 - A. CERAMIC: 90-92% AL₂O₃ BLACK.
 - B. METALLIZATION: REFRACTORY METAL.
 - C. LEADFRAME: ALLOY 42 OR EQUIVALENT; PLATING SHALL BE 50 MICRO INCHES GOLD MIN. OVER 100 MICRO INCHES NICKEL MIN.
- CENTER LINES OF LEADS 5 & 25 SHALL NOT BE MORE THAN ±.004 OFFSET FROM THE CENTER LINES OF THE RESPECTIVE LEAD CONTACT PADS.
- PACKAGE SHALL CONFORM TO MIL SPEC MIL-M-38510, SECTION 3 AS APPLICABLE, CURRENT REV. AS P.O. IS PLACED.
- ACCEPTANCE CRITERIA FOR THIS PACKAGE IS SPEC # 7500020 (AS APPLICABLE)
- TOLERANCES ARE ±1% NLT .005"
- EQUIVALENT TO KYOCERA PB-F91096
- THE ESD TRIANGLE AND THE "DOT" ON THE BACK OF THE PACKAGE ARE REQUIRED AT THE LOCATION SHOWN. EXACT SIZE OF THE TRIANGLE AND DOT ARE THE VENDOR'S OPTION, HOWEVER, EACH MUST BE LARGE ENOUGH TO EASILY BE SEEN WITH THE UNAIDED EYE. (EXISTING AMI/KMI STOCKS OF THIS PACKAGE, THAT DO NOT HAVE THESE FEATURES, CAN AND MUST BE USED UNTIL EXHAUSTED.)

10. PIN ONE IDENTIFIER CONFIGURATION MAY VARY (VENDORS OPTION).

| Qty Recd | Part or Identifying No. | Code Ident | Description | Material or Note | Specification or Reference Desig | Item No. |
|---|-------------------------|------------|-------------|---------------------------------------|----------------------------------|--------------|
| List of Materials or Parts List | | | | | | |
| | | | BWU Drawn | 5-17-83 | Date | |
| | | | Check | Date | | |
| Next Assy | Qty | Approved | Date | 40 LEAD COFF .250" x .250" D/A PAD | | |
| Contracting Units millimeters <input type="checkbox"/> inches <input checked="" type="checkbox"/> | | Approved | Date | | | |
| ±.1 ±.005 ±.002 ±.0005 ±.0002 ±.0001 | | Approved | Date | | | |
| Angle=2° | | Approved | Date | | | |
| | | Code Ident | Size | Drawing No. | Rev | |
| | | OA | D | 6300194 | C | |
| | | Scale | 5:1 | CAD File No | 0194PK0 | Sheet 1 of 1 |



SPECTRUM
SEMICONDUCTOR MATERIALS, INC.

www.spectrum-semi.com Phone: 408-435-5555 Fax: 408-435-8226