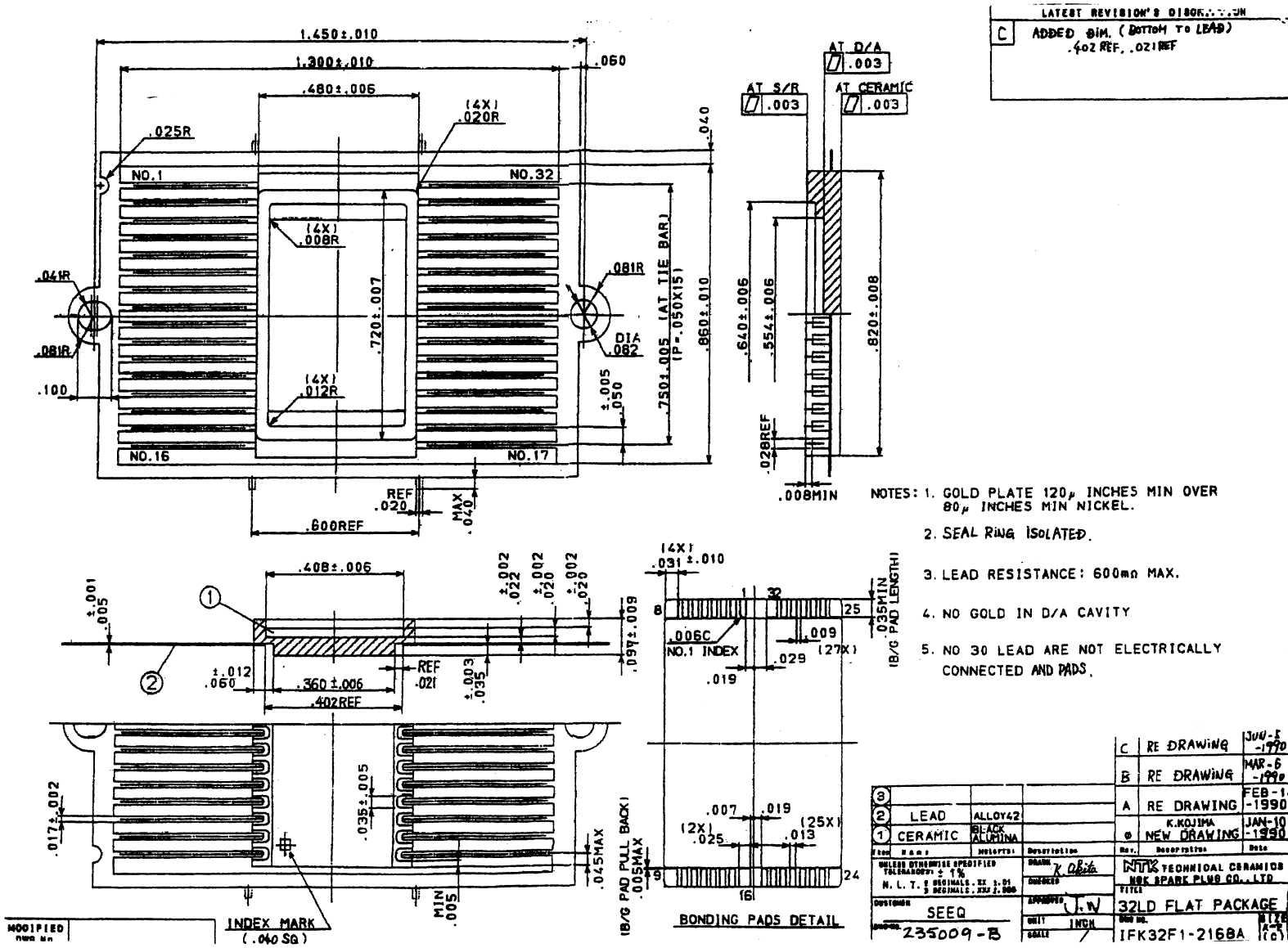


SSM P/N CCF03204



LATEST REVISION'S DISCREPANCY
C ADDED DIM. (BOTTOM TO LEAD)
 .402 REF, .021 REF

- NOTES: 1. GOLD PLATE 120 μ INCHES MIN OVER
 80 μ INCHES MIN NICKEL.
 2. SEAL RING ISOLATED.
 3. LEAD RESISTANCE: 600m Ω MAX.
 4. NO GOLD IN D/A CAVITY
 5. NO 30 LEAD ARE NOT ELECTRICALLY
 CONNECTED AND PADS.

①	LEAD	ALLOY42			
②	CERAMIC	BLACK ALUMINA			
③	SEAL RING				

REV	DATE	DESCRIPTION
1		
2		
3		

DATE	BY	CHECKED	APPROVED	TITLE

CUSTOMER	SEEQ	UNIT	INCH	SCALE

DATE	BY	DATE	BY

