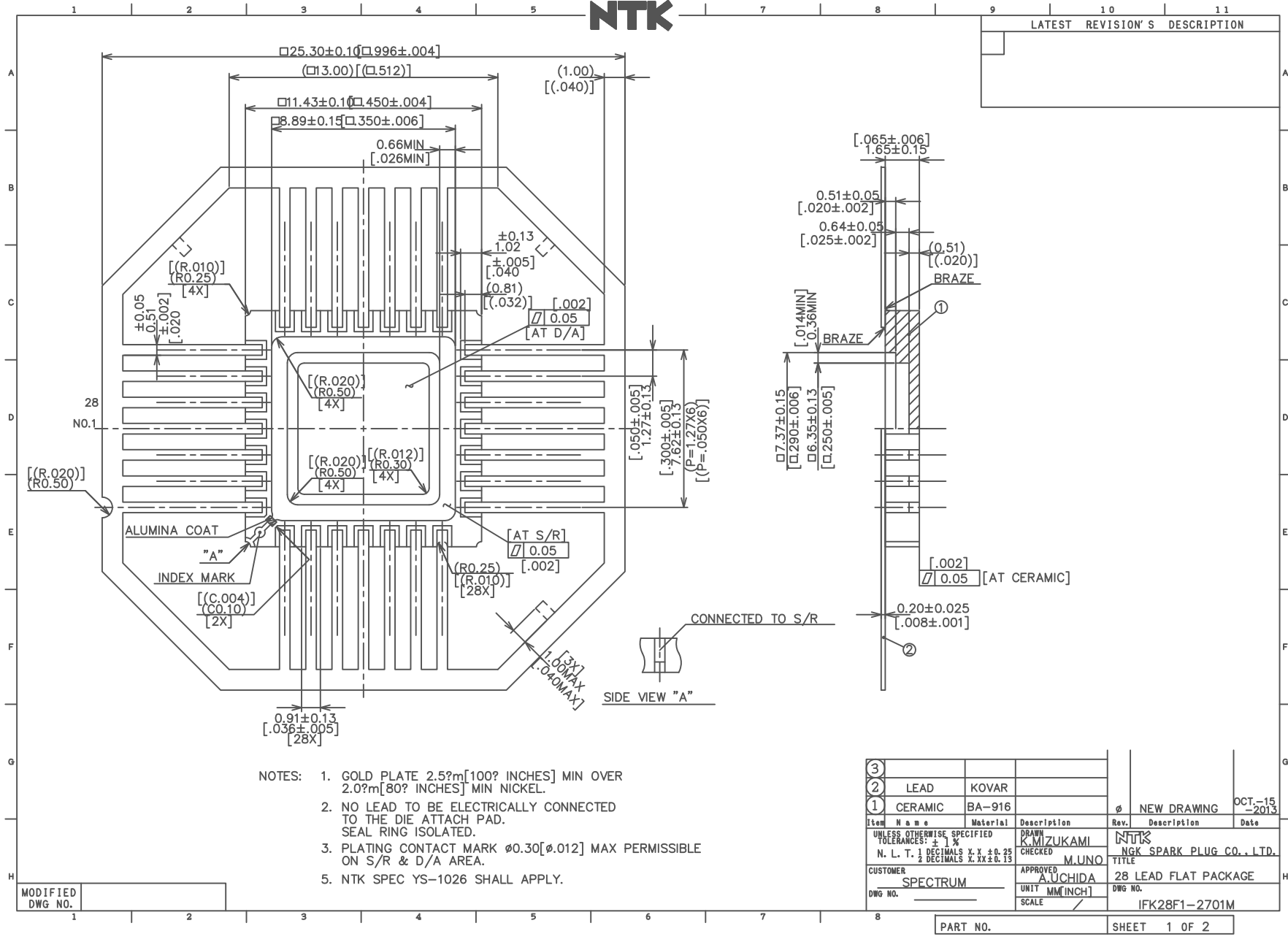




| LATEST REVISION'S DESCRIPTION | |
|-------------------------------|--|
| | |



- NOTES:
- GOLD PLATE 2.5?m[100? INCHES] MIN OVER 2.0?m[80? INCHES] MIN NICKEL.
 - NO LEAD TO BE ELECTRICALLY CONNECTED TO THE DIE ATTACH PAD. SEAL RING ISOLATED.
 - PLATING CONTACT MARK $\phi 0.30$ [$\phi 0.12$] MAX PERMISSIBLE ON S/R & D/A AREA.
 - NTK SPEC YS-1026 SHALL APPLY.

| Item | Name | Material | Description | Rev. | Description | Date |
|--------------------------------|----------|----------|-------------|--------------------------|---------------|-------------|
| 3 | | | | | | |
| 2 | LEAD | KOVAR | | | | |
| 1 | CERAMIC | BA-916 | | | NEW DRAWING | OCT-15-2013 |
| UNLESS OTHERWISE SPECIFIED | | | DRAWN | NTK | | |
| TOLERANCES: ± 1% | | | CHECKED | NGK SPARK PLUG CO., LTD. | | |
| N. L. T. 1 DECIMALS X.X ± 0.25 | | | APPROVED | TITLE | | |
| 2 DECIMALS X.XX ± 0.13 | | | A. UCHIDA | 28 LEAD FLAT PACKAGE | | |
| CUSTOMER | SPECTRUM | UNIT | MM[INCH] | DWG NO. | IFK28F1-2701M | |
| DWG NO. | | SCALE | | | | |

MODIFIED DWG NO.



SSM P/N CCF02822

