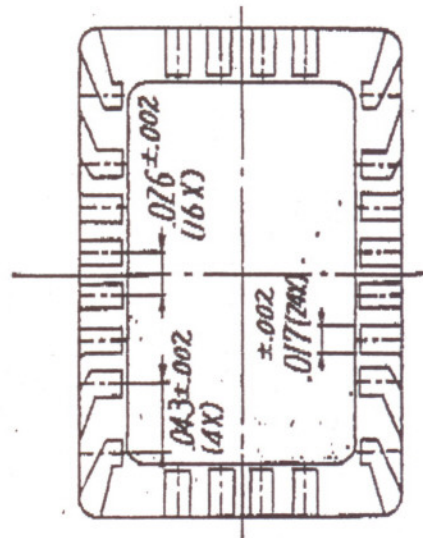
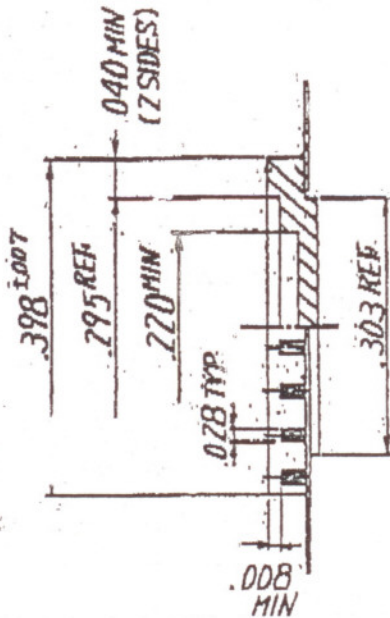
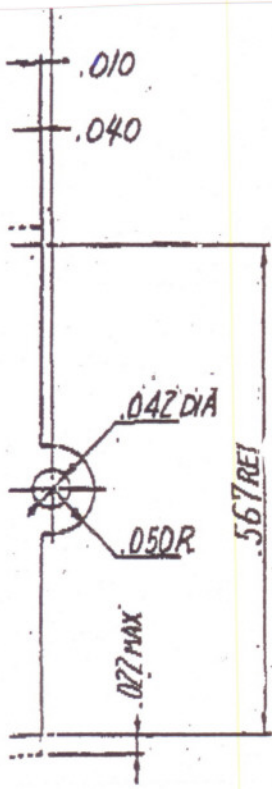


CCF02414 1/2



- NOTES: 1 PLATE: ALL EXPOSED METALS (INCLUDING METALLIZATION, WITH 70 $\mu$  INCHES MIN NICKEL AND THEN WITH 60 $\mu$  INCHES MIN TO 150 $\mu$  INCHES MAX THICK GOLD
- 2 NO LEAD SHALL BE ELECTRICALLY CONNECTED TO THE DIE ATTACH PAD AND SEAL RING

±.005 ±.001

**OPEN-TOOLED**

Z LEAD	KOVAR	B	CHANGED DWG No.			
1 CERAMIC	92% WHITE ALUMINA	A	IFS24F1-1ZZJB WAS -1ZZJA	JAN-1-85		
			RE DRAWING	JUL-15-85		
Item	Name	Material	Description	Rev.	Description	Date
UNLESS OTHERWISE SPECIFIED TOLERANCES: ± 1%			DRAWN	NTK TECHNICAL CERAMICS		
N. L. T. 2 DECIMALS .XX ±.01			CHECKED	NGK SPARK PLUG CO., LTD		
3 DECIMALS .XXX ±.005			APPROVED	TITLE		
CUSTOMER			UNIT	24 LEAD FLAT PACKAGE		
CCF02414 2/2			INCH	DWG NO.		
			SCALE	IFS24F1-1ZZJB		
				SIZE		
				A-3		